

# Allogeneic Disc Progenitor Cells Safely Increase Disc Volume and Improve Pain, Disability, and Quality of Life in Patients With Lumbar Disc Degeneration—Results of an FDA-Approved Biologic Therapy Randomized Clinical Trial

Matthew F. Gornet, Douglas P. Beall, Timothy T. Davis, Domagoj Coric, Michael LaBagnara, Angela Krull, Michael J. DePalma, Patrick C. Hsieh, Srinivas Mallempati, Francine W. Schranck, Colleen Kelly and Kevin T. Foley

*Int J Spine Surg* 2024, 18 (3) 237-248

doi: <https://doi.org/10.14444/8609>

<https://www.ijssurgery.com/content/18/3/237>

This information is current as of September 2, 2024.

---

**Email Alerts** Receive free email-alerts when new articles cite this article. Sign up at:  
<http://ijssurgery.com/alerts>



# Allogeneic Disc Progenitor Cells Safely Increase Disc Volume and Improve Pain, Disability, and Quality of Life in Patients With Lumbar Disc Degeneration—Results of an FDA-Approved Biologic Therapy Randomized Clinical Trial

MATTHEW F. GORNET, MD<sup>1</sup>; DOUGLAS P. BEALL, MD<sup>2</sup>; TIMOTHY T. DAVIS, MD<sup>3</sup>; DOMAGOJ CORIC, MD<sup>4</sup>; MICHAEL LABAGNARA, MD<sup>5</sup>; ANGELA KRULL, MD<sup>6</sup>; MICHAEL J. DEPALMA, MD<sup>7</sup>; PATRICK C. HSIEH, MD, MS<sup>8</sup>; SRINIVAS MALLEMPATI, MD<sup>9</sup>; FRANCINE W. SCHRANCK, BSN<sup>10</sup>; COLLEEN KELLY, PhD<sup>11</sup>; AND KEVIN T. FOLEY, MD, FACS<sup>5</sup>

<sup>1</sup>The Orthopedic Center of St. Louis, St. Louis, MO, USA; <sup>2</sup>Clinical Radiology of Oklahoma, Edmond, OK, USA; <sup>3</sup>Source Health Care, Santa Monica, CA, USA; <sup>4</sup>Carolinas Medical Center/Carolina Neurosurgery & Spine Associates, Charlotte, NC, USA; <sup>5</sup>Semmes-Murphey Clinic and Department of Neurosurgery, University of Tennessee Health Science Center, Memphis, TN, USA; <sup>6</sup>SMART Clinic, Draper, UT, USA; <sup>7</sup>Virginia iSpine Physicians/Virginia Spine Research Institute, Richmond, VA, USA; <sup>8</sup>Los Angeles—USC Health Care Center, Los Angeles, CA, USA; <sup>9</sup>Alabama Clinical Therapeutics, Birmingham, AL, USA; <sup>10</sup>SPIRITT Research, St. Louis, MO, USA; <sup>11</sup>Kelly Statistical Consulting, Carlsbad, CA, USA

## ABSTRACT

**Background:** Progenitor cells derived from intervertebral disc tissue demonstrated immunomodulatory and regenerative properties in preclinical studies. We report the safety and efficacy results of a US Food and Drug Administration–approved clinical trial of these cells for the treatment of symptomatic degenerative disc disease.

**Methods:** Sixty patients with symptomatic single-level lumbar degenerative disc disease (mean age 37.9 years, 60% men) were enrolled in a randomized, double-blinded, placebo-controlled Phase I/Phase II study at 13 clinical sites. They were randomized to receive single intradiscal injections of either low-dose cells ( $N = 20$ ), high-dose cells ( $N = 20$ ), vehicle alone ( $N = 10$ ), or placebo ( $N = 10$ ). The primary endpoint was mean visual analog scale (VAS) pain improvement  $>30\%$  at 52 weeks. Disc volume was radiologically assessed. Adverse events (AEs), regardless of whether they were related to treatment, were reported. Patients were assessed at baseline and at 4, 12, 26, 52, 78, and 104 weeks posttreatment.

**Results:** At week 52, the high-dose group had a mean VAS percentage decrease from baseline ( $-62.8\%$ ,  $P = 0.0005$ ), achieving the endpoint of back pain improvement  $>30\%$ ; the mean change was also significantly greater than the minimal clinically important difference of a 20-point decrease ( $-42.8$ ,  $P = 0.001$ ). This clinical improvement was maintained at week 104. The vehicle group had a smaller significant decrease in VAS ( $-52.8\%$ ,  $P = 0.044$ ), while the low-dose and placebo groups showed nonsignificant improvements. Only the high-dose group had a significant change in disc volume, with mean increases of  $249.0 \text{ mm}^3$  ( $P = 0.028$ ) at 52 weeks and  $402.1 \text{ mm}^3$  ( $P = 0.028$ ) at 104 weeks. A minority of patients ( $18.3\%$ ) reported AEs that were severe. Overall,  $6.7\%$  of patients experienced serious AEs, all in the vehicle ( $n = 1$ ) or placebo ( $n = 3$ ) groups, none treatment related.

**Conclusions:** High-dose allogeneic disc progenitor cells produced statistically significant, clinically meaningful improvements in back pain and disc volume at 1 year following a single intradiscal injection and were safe and well tolerated. These improvements were maintained at 2 years post-injection.

**Level of Evidence:** 1.

**Clinical Trial Registration:** NCT03347708—Study to Evaluate the Safety and Preliminary Efficacy of Injectable Disc Cell Therapy, a Treatment for Symptomatic Lumbar Intervertebral Disc Degeneration.

Lumbar Spine

Keywords: degenerative disc disease, disc progenitor cells, lumbar disc injectable treatment, lumbar disc volume

## INTRODUCTION

Chronic low back pain (CLBP) affects 12% to 30% of US adults at a given time.<sup>1</sup> It is a leading cause of disability worldwide and the leading cause of years lived with

disability in developing countries.<sup>2,3</sup> The 2010 Global Burden of Disease Study estimated that lower back pain is among the top 10 diseases and injuries that account for the highest number of disability-adjusted life years worldwide.<sup>4</sup>



Low back pain often arises from degeneration of the intervertebral disc. As the world population ages, CLBP will increase substantially due to the deterioration of the intervertebral discs in older people.<sup>5</sup> There is evidence, however, that if CLBP starts at a younger age, it is likely that the pain is discogenic in nature.<sup>6</sup> Discogenic pain is pain arising from a damaged intervertebral disc, particularly associated with degenerative disc disease (DDD), a chronic and progressive condition that is characterized by the breakdown of tissue and inflammation within the intervertebral disc, resulting in pain and disability. The intervertebral disc is relatively avascular, hypoxic, and hypocellular, making it perhaps more prone to degenerative conditions.<sup>7</sup>

Disc degeneration is associated with structural changes within the disc, including loss of hydration, decrease in cell volume, and diminished extracellular matrix molecules (eg, proteoglycans). These degenerative changes likely contribute to disc tissue becoming less functional and can result in a significant volumetric decrease in the intervertebral disc.<sup>8</sup> As a consequence, patients can develop pain and disability.

Degenerated discs are characterized by upregulation of inflammatory cytokines, such as interleukins and tumor necrosis factor alpha,<sup>9</sup> which can lead to further tissue breakdown and pain. The breakdown of tissue within the disc is due to the depleted capacity of local cells to produce new extracellular matrix, as well as to an imbalance in anabolic and catabolic activity within the tissue.<sup>7</sup> Other aspects of a pathologic symptomatic disc include abnormal innervation, devascularization, and changes to the disc endplates. These changes can result in global tissue structural damage that may be manifested by acute and chronic pain and may eventually result in structural failure.

The pain and disability associated with symptomatic DDD can have significant short- and long-term consequences ranging from broad to highly specific social, physical, and economic impacts. At the macro level, the annual expenditure to treat CLBP in the United States is estimated to be over \$100 billion,<sup>3</sup> creating a significant burden on the economy and the patients dealing with CLBP. DDD not only can impair an individual's ability to perform simple self-care activities and preclude them from enjoying leisure activities, but it can also prevent them from working and contributing meaningfully to society.<sup>10</sup>

Physically, DDD creates structural changes that result in abnormal mechanical and biological-pathological processes. This can lead to facet joint arthritis, osteophyte formation, spinal canal stenosis,

and spondylolisthesis. Current treatment options for symptomatic DDD in early stages are limited. Treatment modalities may include various medications, physical therapy, epidural steroid injections, acupuncture, chiropractic care, and other nonsurgical modalities. When the disease progresses to more advanced stages, is unresponsive to nonoperative measures, and remains clinically debilitating, surgical intervention is indicated. Surgical intervention typically consists of obliteration of the pathological disc followed by fusion or total disc replacement. These surgeries are substantial, costly procedures with significant risks and relatively limited success rates, which should be reserved as a last-resort treatment. Fusions may also result in subsequent adjacent-level degeneration, which has reported incidence rates of up to 62.5% following lumbar fusion surgery.<sup>11,12</sup>

Given the drawbacks to surgical treatment of symptomatic DDD, a less invasive treatment option is desirable. Allogeneic progenitor cells derived from adult human intervertebral disc tissue have demonstrated both immunomodulatory and regenerative properties in preclinical animal studies, including the ability to increase aggrecan and collagen production and restore disc volume and histology.<sup>13</sup> Injectable disc cell therapy (IDCT or rebonuputemcel) is an allogeneic injectable discogenic progenitor cell therapy intended for patients experiencing pain caused by early to moderate DDD. The active ingredient of IDCT is a live disc progenitor cell population derived from the intervertebral disc tissue of adult organ donors that is enriched and expanded in the laboratory into discogenic cells. The discogenic cells are mixed with a viscous sodium hyaluronate solution and excipients to generate IDCT, the final drug product. Preclinical in vitro and in vivo evaluations of discogenic cells have been previously reported and have shown that the cells produce an extracellular matrix that may rebuild the depleted tissue within degenerating discs while not posing any significant safety concerns.<sup>13</sup>

In the present study, we report the findings of a US Food and Drug Administration (FDA)-approved randomized, double-blinded, vehicle- and placebo-controlled, multicenter combined Phase I and Phase II study to evaluate the safety and tolerability of a single injection of IDCT. Clinical and radiographic outcomes were assessed in human subjects with single-level, symptomatic, early-to-moderate lumbar intervertebral disc degeneration. This is an investigational new drug following a Biologics License Application pathway.



## METHODS

This study was conducted in accordance with the protocol and consensus ethical principles derived from international guidelines. The protocol, protocol amendments, informed consent form, investigator brochure, and other relevant documents (eg, advertisements) were submitted to an Institutional Review Board (IRB)/Independent Ethics Committee by DiscGenics, Inc., the study sponsor, and reviewed and approved by the IRB/Independent Ethics Committee (Advarra IRB, assurance #00023875) before the study was initiated. Each investigator site also received IRB approval before beginning participation, and informed consent was obtained from all study participants. The clinical trial was registered at ClinicalTrials.gov, #NCT03347708.

The study was a Phase I/II, first-in-human, randomized, double-blinded, vehicle- and placebo-controlled, multicenter study in patients with single-level, symptomatic lumbar (L3–S1) intervertebral disc degeneration. Although this was first submitted to the FDA as a Phase I study to be followed by a Phase II, at the FDA's suggestion, the 2 phases were merged so that the evaluation of efficacy endpoints occurred simultaneously with dose escalation and safety outcomes. Patients were followed for a total of 2 years. The CONSORT (Consolidated Standards of Reporting Trials) guidelines were used in the reporting of this study.<sup>14</sup>

### Patients

Thirteen sites in 12 states recruited and treated patients. Sixty patients were enrolled between March 2018 and February 2022. Inclusion and exclusion criteria are listed in Table 1. The sample size was based on visual analog scale (VAS) data (the primary efficacy measure) collected from a pilot study ([http://www.spinalrestoration.com/clinical\\_trials/](http://www.spinalrestoration.com/clinical_trials/)); within the limitations of a 2-dose and 2 controls early phase trial, size was calculated for a 5% level of significance 1-sided test and 80% power to reject the null hypothesis that mean reduction from baseline VAS score would be equal to 30% when the alternative, mean reduction from baseline greater than 30%, was true. This yielded a sample size of 13 patients for each of the 2 test treatment groups, with the use of a 2:2:1:1 allocation ratio for the 2 cell dose groups, the vehicle group, and the placebo group. Allowing for a 30% dropout rate, a total of 60 patients were randomized: 20 to each cell treatment dose group and 10 each to the vehicle and placebo control groups.

The baseline disease characteristics of the study population were representative of an adult population with treatment-resistant low back pain secondary to lumbar disc degeneration. Median time since symptomatic DDD diagnosis was 5.6 months (range 0.4 [history but no formal diagnosis until the screening visit] to 191.9 months), and there was a prevalence of prior epidural injection (28.3%), physiotherapy (26.7%), insomnia (20.0%), chiropractic procedure (18.3%), and pain in extremity (16.7%). Patients also reported drug hypersensitivity (21.7%), anxiety (16.7%), depression (16.7%), and seasonal allergies (16.7%).

Patients were randomly assigned to 1 of 4 groups: low-dose IDCT ( $N = 20$ ; 3,000,000 cells/mL), high-dose IDCT ( $N = 20$ ; 9,000,000 cells/mL), vehicle alone ( $N = 10$ ; sodium hyaluronate), and placebo ( $N = 10$ ; normal saline). The dose levels were based on prior rabbit studies, with cell dose increased by the factors resulting from a ratio of average human disc volume to average rabbit disc volume.<sup>13</sup> Demographic characteristics were generally balanced between treatment groups, although the median age in the vehicle group was slightly higher than the other groups. Overall patient follow-up was 85.0% at 2 years (see Figure 1, CONSORT flow chart). Demographics and baseline characteristics for all patients and by group are shown in Table 2. Overall, ages ranged from 18 to 61 years. A majority were men (60%) and white (85%). The majority had a modified Pfirrmann score of 4 (65%). Two-thirds of the patients were treated at the L5-S1 level. Although there was some variability within and between groups, differences between groups were not statistically significant.

### Product Description

Discogenic cells are created through a multistep manufacturing process resulting in significant proliferation and phenotypic changes to the cells. This process has been previously described.<sup>13</sup> Human disc tissue is obtained from adult organ donors and washed, and unwanted tissue is dissected away. The cells are isolated from the tissue, seeded at 10,000 cells/cm<sup>2</sup>, expanded using a cocktail of supplements, passaged, and then grown in suspension culture. At the completion of the process, the discogenic cells are subjected to extensive testing prior to use, including identity, purity, potency, and safety evaluations. For this study, treatment was generated from 3 manufactured lots from a single donor.

Discogenic cells possess unique properties that characterize them as progenitor cells. The cells express the surface markers of differentiation to include CD73,



**Table 1.** Inclusion and exclusion criteria.**Inclusion Criteria**

1. Diagnosis of early to moderate, symptomatic, single-level degenerative disc disease from L3–S1.
2. Target disc that met Modified Pfirrmann Grades 3–7.
3. Aged  $\geq 18$  and  $\leq 75$  years, skeletally mature, with body mass index  $\geq 18$  kg/m<sup>2</sup> at screening.
4. Chronic low back pain for at least 6 mo prior to screening.
5. Low back pain that was unresponsive to at least 3 mo of conservative care (nonoperative treatment) within the previous year, which may have included physical therapy, as well as bed rest, anti-inflammatory or analgesic medications, chiropractic manipulations, acupuncture, massage, or home-directed lumbar exercise programs.
6. Pretreatment low back pain of 40–90 mm on the VAS at screening and day 1.
7. Pretreatment Oswestry Disability Index score of 30–90 at screening and day 1.
8. Willing to voluntarily sign the informed consent form and agreed to the release of previous medical history for purposes of this study (ie, HIPAA authorization) at screening.
9. Physically and mentally able to comply with the protocol, able to understand and complete the required forms, and willing and able to adhere to the requirements of the protocol in the opinion of the investigator.
10. Female patients of childbearing potential had to agree to and comply with using highly effective methods of birth control for the duration of the study (eg, oral contraceptive, implant, injectable, indwelling intrauterine device, sexual abstinence, condoms, or a vasectomized partner).

**Exclusion Criteria****Physical/medical history exclusion criteria**

1. Low back pain that, in the investigator's opinion, was predominately myofascial in nature.
2. Constant, unchanging low back pain that was not improved in any spinal position.
3. Radiculopathy resulting from nerve compression.
4. Nonradicular unilateral or bilateral leg pain with intensity greater than 50% of the intensity of the low back pain, as measured by VAS.
5. Leg pain that was of radicular origin (ie, due to stimulation of nerve roots or dorsal root ganglion of a spinal nerve by compressive forces).
6. Frequent leg pain that extended below the knee.
7. Severe unilateral or bilateral osteoarthritis of the knee or hip.
8. Cauda equina syndrome.
9. Previous lumbar spine surgery.
10. Previous disc-invasive treatment procedures (ie, intradiscal electrothermal therapy and intradiscal radiofrequency thermocoagulation), intradiscal injections (ie, injection of corticosteroids, methylene blue, dextrose, or glucosamine and chondroitin sulfate), or epidural steroid injections at L3–S1 within the 3 mo prior to screening. (Discography may have been performed, but the procedure must have been done at least 2 wk or more prior to the injection of study medication.)
11. Clinical suspicion of facet pain as a primary pain generator.
12. Current infection at the planned procedure site, active systemic infection, or current or prior history of lumbar spinal infection (ie, discitis, septic arthritis, and epidural abscess) at baseline (day 1).
13. A history of fibromyalgia as diagnosed by a rheumatologist.
14. Tested positive for hepatitis B virus, hepatitis C virus, or HIV.
15. The presence of an active malignancy or tumor, or a prior history of malignancy within the past 5 y (except for basal cell carcinoma of the skin).
16. The presence or prior history of a spinal malignancy.
17. Significant systemic disease, such as unstable angina or autoimmune disease, such as rheumatoid arthritis.
18. A congenital or acquired coagulopathy or thrombocytopenia.
19. Currently taking anticoagulant, antineoplastic, antiplatelet, or thrombocytopenia-inducing medications (except for aspirin or nonsteroidal anti-inflammatory drugs).
20. At higher risk for postsurgical infection (eg, taking immunosuppressants), had a severe infection, or had a history of serious infection.
21. Concomitant conditions requiring daily oral steroid usage for more than 30 d in the preceding 90 d before screening.
22. History of chronic opioid use (greater than 3 mo), unless the patient had been off opioids for 3 mo prior to enrollment.
23. History of unexplained, easy, or persistent bruising or bleeding, bleeding from the gums, or bleeding problems experienced in previous surgical procedures.
24. History of hypersensitivity or anaphylactic reaction to bovine products, sodium hyaluronate/hyaluronan/hyaluronic acid, gentamicin, amphotericin b, dimethyl sulfoxide, crustaceans/shellfish, or porcine products.
25. Uncontrolled psychiatric condition or substance/alcohol abuse that would potentially interfere with the patient's participation in the study within 2 y prior to screening in the opinion of the investigator.
26. Positive serum pregnancy test or nursing at the time of screening or had plans to become pregnant within the planned length of the study (2 y).
27. A body habitus that precludes adequate fluoroscopic visualization for the procedure, or the procedure was physically impossible.
28. Required an implantable electronic defibrillator, pacemaker, or had other contraindication to MRI scanning or could not tolerate MRI scanning. Patients who were expected to require a defibrillator or pacemaker as determined by the investigator were excluded.
29. Participated in another clinical study within the 6 mo prior to screening.
30. Been a recipient or planned to be a recipient during trial participation of stem cell/progenitor cell therapy or other biologic intervention to repair discs at L3–S1.

**Other exclusion criteria**

31. Pending litigation against a health care professional, except where required by the insurer as a condition of coverage.
32. Prisoner or active military personnel who was not available for the entire planned length of the trial.
33. Active or pending worker's compensation claims.
34. In the investigator's opinion, the patient was not suitable for participation in the clinical trial.

**Imaging exclusion criteria: Modified Pfirrmann exclusion criteria for L3–S1**

35. Had 2 discs between L3 and S1 that were Modified Pfirrmann Grades 4–7, and the Modified Pfirrmann Visualization showed that the target disc was the same or better than the nontarget disc.
36. Had 2 discs between L3 and S1 that were Modified Pfirrmann Grades 4–7 and a discogram on the nontarget disc demonstrated symptomatic involvement.
37. All 3 discs had Modified Pfirrmann Grades 4–7.



**Table 1.** Continued.**Exclusion Criteria**

Imaging exclusion criteria: Radiographic exclusion criteria for L3–S1

38. Evidence of prior lumbar vertebral body fracture at L3–S1.
39. An acute fracture of the spine at the time of study enrollment. Clinically compromised vertebral bodies within L3–S1 due to current or past trauma (eg, sustained pathological fracture or multiple fractures of vertebrae).
40. Evidence of dynamic instability on lumbar flexion-extension radiographs as indicated by >4.5 mm of translational motion at L3–S1; >15° of angular motion at L3–L4; >20° of angular motion at L4–L5; or >25° angular motion at L5–S1.
41. Grade 2 or higher spondylolisthesis at L3–S1, as assessed by Meyerding classification.
42. Lumbar spondylitis or other undifferentiated spondyloarthropathy.
43. Evidence of Type III Modic changes at L3–S1.
44. Clinical suspicion of a full-thickness annular tear at L3–S1.
45. Evidence of abnormal disc morphology defined as an extrusion or sequestration according to Fardon classification at L3–S1.

Abbreviations: HIPAA, Health Insurance Portability and Accountability Act; MRI, magnetic resonance imaging; VAS, visual analog scale.

CD90, and human leukocyte antigen (HLA)-ABC but do not express CD24, CD34, or HLA-DR/DQ/DP.<sup>13,15</sup> This surface marker pattern is tested for and must be present on every batch of discogenic cells. Discogenic cells are multipotent for mesenchymal lineages, including having a strong chondrogenic potential. Endogenously, the cells generate proteoglycan and collagen types 1 and 2, which are the extracellular matrix molecules that make up part of the intervertebral disc.

## Materials

### Efficacy

For primary efficacy evaluation, patients recorded their perceived low back pain level using a VAS ranging from “no pain” (score of 0) to “pain as bad as it could be” or “worst imaginable pain” (score of 100) on a 100 mm scale. VAS scores for study inclusion were between 40 and 90 mm, and the minimal clinically important difference (MCID) for VAS following an intervention or treatment is commonly reported in the range of –18 to –23 mm.<sup>16,17</sup> For this study, we considered the MCID to be at least –20 mm.<sup>18</sup>

Secondary efficacy evaluation included the Oswestry Disability Index (ODI)<sup>19</sup> and the EQ-5D Health Index,<sup>20</sup> as well as imaging data (magnetic resonance imaging [MRI] and plain film assessments; disc volume was evaluated by an independent imaging core lab), nonsurgical or surgical interventions after the investigational treatment (time to lumbar spine intervention), test of mobility, assessment of exercise, and functional biomarkers of pain. The MCID for the ODI has reported values in the range of 9 to 13.<sup>16,18,21–23</sup> For the purposes of this study, MCID of –15 was selected. The MCID for the EQ-5D was considered to be 0.08.<sup>24</sup>

MRI-based evaluations, from both automated and manual imaging analysis, including mean T2 values, disc volume, disc height, and/or disc height index, Modic Pfirrmann grade, T1 rho, Modic changes, annular

tears/fissures, endplate integrity, and herniation, were performed at screening (baseline) and at 12, 26, 52, 78, and 104 weeks. X-ray assessments for disc height and/or disc height index and Kellgren-Lawrence score of disc degeneration were performed at these same intervals.

### Safety

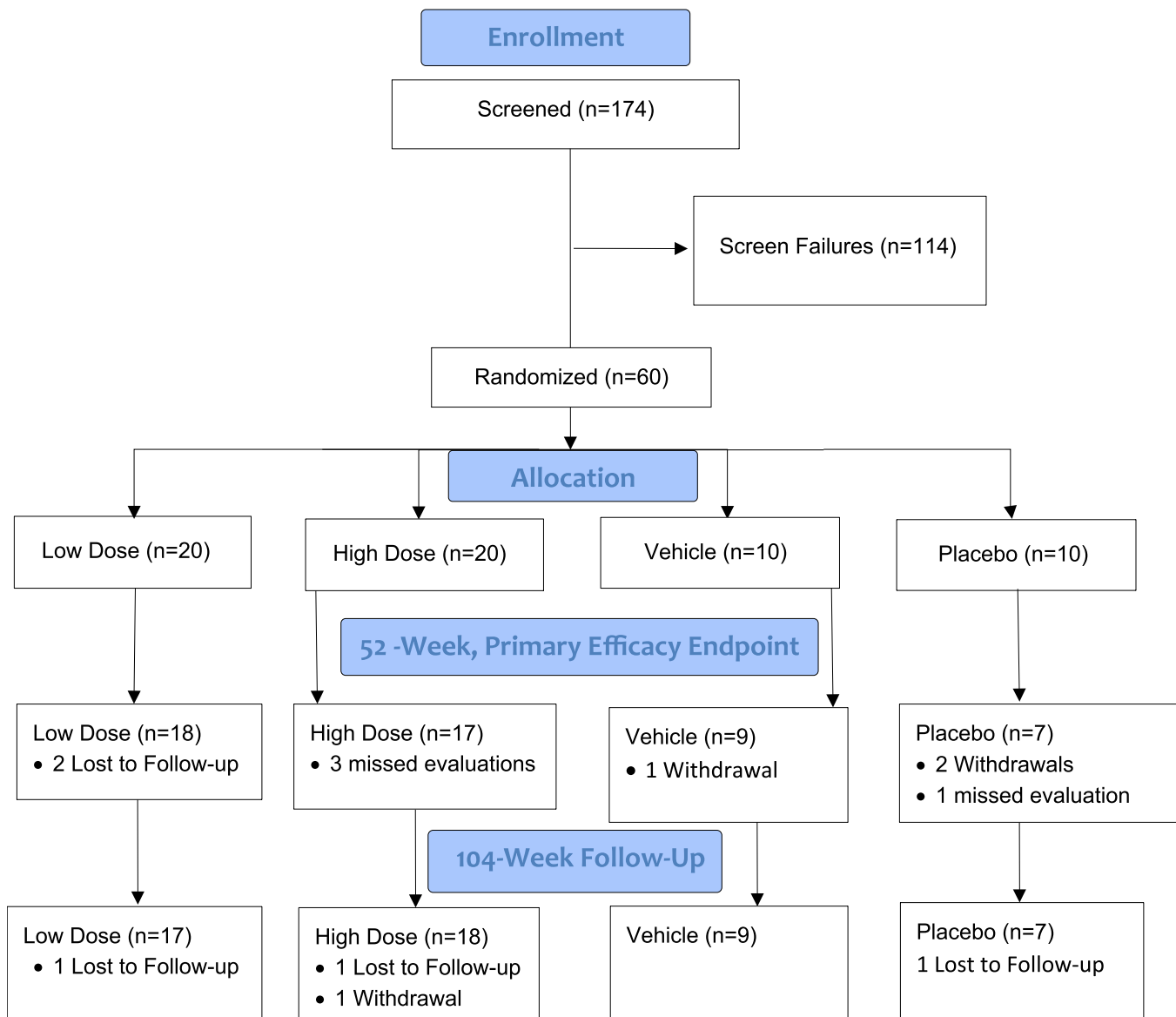
An adverse event (AE) was defined as the development of an undesirable medical condition or the deterioration of a preexisting medical condition following or during exposure to the treatment, whether or not considered causally related to the treatment. Safety assessment included documentation of all AEs, including pain level significantly worsened as measured by an increase of more than 30 points on the VAS and function level significantly worsened as measured by an increase of more than 30 points on the ODI compared with baseline. Safety analysis also included assessment of hematology, blood chemistry, serum panel reactive antibodies, vital signs, physical condition, and body weight/height measurements.

AEs were recorded including intensity (mild, moderate, or severe) and causality (not related, possibly related, or probably related). Serious adverse events (SAEs) were defined by standard FDA clinical trial reporting criteria. AEs were considered for the relationship to the injection device, to the injection technique/procedure, and to the investigational cells and/or vehicle. All AEs were classified using MedDRA (Medical Dictionary for Regulatory Activities).

### Procedures

Up to 30 days prior to treatment, patients consented and were screened for study inclusion, including baseline MRI and x-ray imaging, for which a central image analysis vendor provided confirmation of study eligibility prior to randomization. Patients eligible to enter the



**DGX-A01 CONSORT Flow Diagram**

**Figure 1.** Study CONSORT (Consolidated Standards of Reporting Trials) flow chart.

study were randomized via a web-based software platform (Interactive Web Response System) to 1 of 4 treatment cohorts. Randomization occurred between 7 and 10 days before the target treatment date. The study used a double-blinded protocol, with an injecting investigator and an assessing investigator. The injecting investigator could not be blinded due to differences in viscosity of the injected materials, but that investigator did not participate in clinical follow-up. The assessing investigator was blinded to treatment and was not present in the room during investigational product preparation or administration. All patient assessments were conducted

by the noninjecting/assessing investigator. Patients and all staff involved in the care of the patients were blinded to treatment. There were 2 parts to the study. In Part 1, patients were randomized in a 4:1:1 ratio to low-dose IDCT (3,000,000 cells/mL;  $N = 20$ ), vehicle ( $N = 5$ ), or placebo (saline,  $N = 5$ ) groups, respectively. Part 2 started after the completion of the enrollment of Part 1. In Part 2, additional patients were randomized in a 4:1:1 ratio to high-dose IDCT (9,000,000 cells/mL;  $N = 20$ ), vehicle ( $N = 5$ ), or placebo (saline,  $N = 5$ ), respectively.

To monitor the safety of the investigational product, the first 6 patients of Part 1 (low-dose, vehicle, and



**Table 2.** Demographics and baseline characteristics for all patients and by treatment group.

Characteristics	All N = 60	Low-Dose IDCT N = 20	High-Dose IDCT N = 20	Vehicle N = 10	Placebo N = 10
Age, y, mean (SD)	37.9 (9.7)	36.6 (9.0)	36.9 (8.0)	43.0 (11.0)	37.3 (12.5)
Sex, men/women, %	60.0/40.0	70.0/30.0	50.0/50.0	60.0/40.0	60.0/40.0
Body mass index, kg/m <sup>2</sup> , mean (SD)	27.4 (4.4)	26.3 (4.3)	27.2 (4.3)	28.7 (4.7)	27.4 (4.4)
Race, %	85.0	90.0	85.0	80.0	85.0
White	5.0	5.0	10.0	0.0	0.0
Asian	3.3	5.0	0.0	10.0	0.0
Black/African American	1.7	0.0	5.0	0.0	0.0
American Indian/Alaskan Native	5.0	0.0	0.0	10.0	20.0
Other/multiple					
Modified Pfirrmann Score, %					
3	11.7	5.0	25.0	0.0	10.0
4	65.0	75.0	55.0	80.0	50.0
5	1.7	0.0	0.0	0.0	10.0
6	16.7	15.0	15.0	20.0	20.0
7	5.0	5.0	5.0	0.0	10.0
Target treatment level, %					
L3–L4	5.0	10.0	0.0	10.0	0.0
L4–L5	28.3	10.0	25.0	50.0	50.0
L5–S1	66.7	80.0	75.0	40.0	50.0

Abbreviation: IDCT, injectable disc cell therapy.

placebo) were enrolled with a separation of 72 hours between dosing. Since no safety concerns were noted, the remaining Part 1 patients were enrolled. Only after Part 1 patients had been fully enrolled, with no safety issues observed and after a separation of 4 weeks, did enrollment for Part 2 (high-dose, vehicle, and placebo) begin, also with a separation of 72 hours for the first 6 patients. To maintain the blinded nature of the study, the control cohorts were enrolled alongside the low- and high-dose cohorts. An independent data monitoring committee monitored the risk-benefit ratio and could recommend stopping dosing.

On day 1 of the study, patients received a single intradiscal injection of 1 mL of their assigned treatment into a single symptomatic lumbar (L3–S1) intervertebral disc under fluoroscopic (or computed tomographic) guidance and local anesthesia or conscious sedation per site standard of care. They remained at the site until meeting discharge criteria. On days 2, 3, or 4 of the study, patients were contacted by phone to determine their condition and whether there were any issues or AEs. At site visits (weeks 4, 12, 26, 52, 78, and 104), patients were screened for standard laboratory parameters, vital signs, pain medication use, disc interventions unrelated to the index injection in the study, VAS for low back pain, ODI, and EQ-5D questionnaires. Timed Up and Go test, assessment of exercise, MRI, radiographs, and neurological examination were also performed to evaluate for primary, secondary, and exploratory endpoints. Serum panel reactive antibodies were drawn prior to administration of treatment and at week 4.

All patients were intended to be followed for a total of 2 years, with a primary study period (1 year)

followed by an additional 1-year extension period. After all patients had completed the primary study period at 1 year, the study was unblinded to conduct the primary safety and efficacy analyses. The sponsor, contract research organization (with the exception of blinded site monitors), and Medical Monitor were unblinded at this time. Patients, site personnel (including assessing investigators), imaging vendor, and blinded site monitors remained blinded to individual cohort assignments until after completion of the extension period. The independent data monitoring committee oversaw the clinical study. Except for patients who withdrew from the study, all were followed until study end (104 weeks).

## Data Analysis

Interim (week 52) and final (week 104) data analyses were performed. The primary efficacy endpoint was a change from baseline in low back pain at 52 weeks as measured on a 100 mm VAS. A right-tailed, paired *t* test at a 5% significance level was performed on percentage change from baseline in VAS score at 52 weeks for each treatment group, with the null hypothesis that mean percentage reduction from baseline was less than or equal to 30% vs the alternative that mean percent reduction from baseline was greater than 30%.

Only patients with complete data were included in the primary analyses. To avoid potential biases due to differential drop-out rates, a repeated-measures mixed-effects linear model was used, which uses maximum likelihood to account for the missing data. Change from baseline in VAS score was considered as the response variable, the patient was considered as a random



explanatory variable, and visit and a treatment-by-visit interaction were considered as fixed variables. Differences between groups were assessed with a Wald test of treatment.

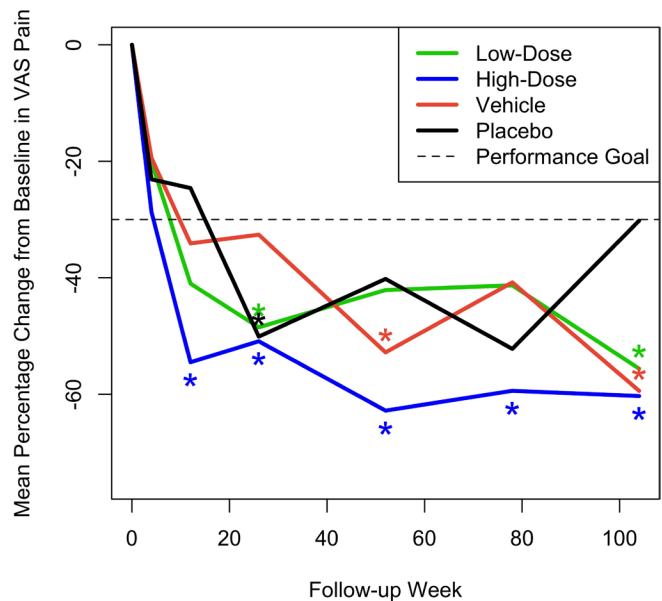
In addition, the proportion of patients achieving >30% reduction in VAS at week 52 was determined along with a 2-sided exact (Clopper-Pearson) 95% CI. The null hypothesis of no between-treatment differences was tested using Fisher's exact method.

For secondary efficacy, the changes from baseline in ODI and EQ-5D scores at each time interval were evaluated using 2-tailed paired *t* tests for each treatment group separately. Analysis of covariance was used to test for differences between groups. For quantitative MRI assessment parameters, baseline values were compared against the values obtained at each time point posttreatment for each treatment group using a 2-sided paired *t* test.

## RESULTS

### Primary Efficacy

Mean pain VAS measurements on day 1 prior to treatment were as expected for a study population with CLBP (range 60.5–64.9 mm), with no notable difference between treatment groups. At week 52, the study's primary efficacy endpoint, a statistically significant mean percentage decrease from baseline in VAS, was observed in the high-dose IDCT group (–62.8% [90% CI –77.1, –48.5],  $P = 0.0005$ ), achieving the primary efficacy endpoint of back pain improvement greater than 30% at 52 weeks. A smaller, but significant percentage decrease in VAS was observed in the vehicle group (–52.8% [90% CI –74.73, –30.92],  $P = 0.044$ ). VAS scores in the high-dose cell group were also significantly improved over baseline, with the percentage decrease of >30%, at all follow-up intervals after 12 weeks. The vehicle group improved significantly (>30%) in VAS only at week 52 and the low-dose and placebo groups only at week 26 (–48.49% [90% CI –61.03, –35.94],  $P = 0.010$  and –50.13% [–65.24, –35.02],  $P = 0.021$ , respectively). Neither of them improved significantly at week 52. Only the high-dose cell group showed a reduction in back pain VAS that was significantly greater than an MCID of –20 mm at week 52 (–42.8 [–55.9, –29.7],  $P = 0.002$ ) and maintained this significance at all posttreatment intervals. The mean percentage change across time for the 4 groups is shown in Figure 2. Results from the mixed-effects models were similar. In addition, Table 3 provides actual mean VAS values for each treatment group



**Figure 2.** Mean percent change across time from baseline in visual analog scale (VAS) pain scores for the 4 treatment groups. Asterisks denote statistically significant improvement of greater than 30%.

at all test intervals. There were neither statistically significant differences in mean VAS change from baseline across treatment groups at any interval nor were the percentages of patients with >30% reduction in low back pain VAS at week 52 significantly different across groups, although the high-dose IDCT group had the highest percentage of patients with >30% reduction (70%) compared with 55% in the low-dose group and 60% in the combined vehicle and placebo groups.

### Secondary Efficacy Measures

#### Patient Questionnaires

Figures 3 and 4 show the mean change from baseline over time in ODI and EQ-5D, respectively, compared with MCID. Although statistically significant mean improvements from baseline in ODI were observed for all 4 treatment groups, only the high-dose IDCT group

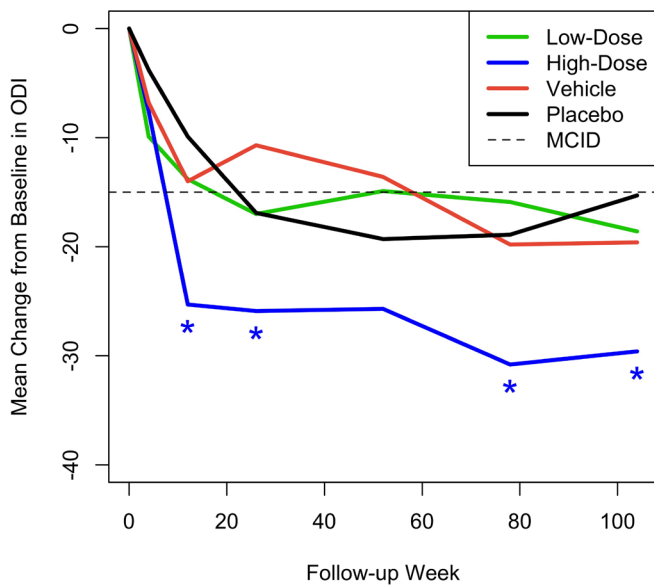
**Table 3.** Mean (SD) pain visual analog scale scores in mm for the 4 treatment groups across time.

Treatment Group	Low-Dose IDCT N = 20	High-Dose IDCT N = 20	Vehicle N = 10	Placebo N = 10
Day 1	60.5 (13.4)	64.9 (14.7)	62.6 (10.0)	63.3 (17.1)
Week 4	46.8 (24.2)	45.2 (27.3)	51.8 (20.9)	45.9 (15.4)
Week 12	34.8 (23.3)	30.3 (24.8)	40.4 (23.6)	45.6 (16.7)
Week 26	31.5 (19.9)	32.1 (23.7)	41.1 (18.2)	29.6 (8.7)
Week 52 <sup>a</sup>	36.6 (23.8)	23.8 (21.2)	30.0 (24.2)	38.6 (23.9)
Week 78	37.3 (24.6)	25.9 (26.2)	34.9 (21.5)	31.6 (21.2)
Week 104	28.1 (21.9)	26.7 (26.6)	25.2 (17.5)	44.8 (18.8)

Abbreviation: IDCT, injectable disc cell therapy.

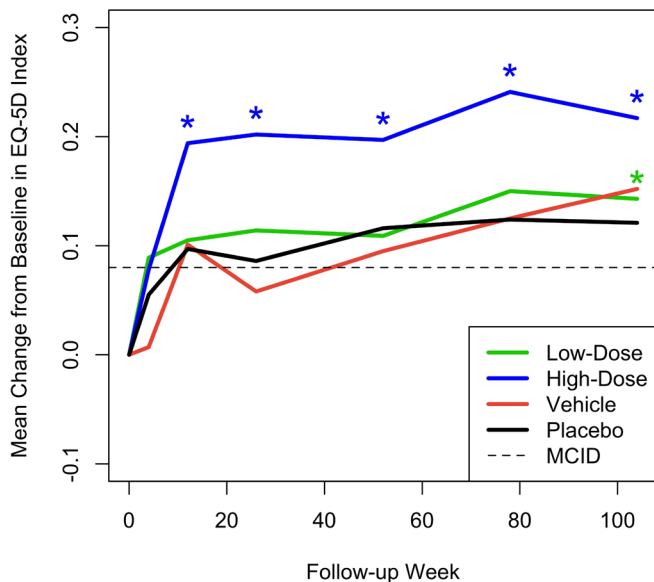
<sup>a</sup>Primary endpoint (*N*'s = 18, 17, 9, and 7 for the 4 groups, respectively).



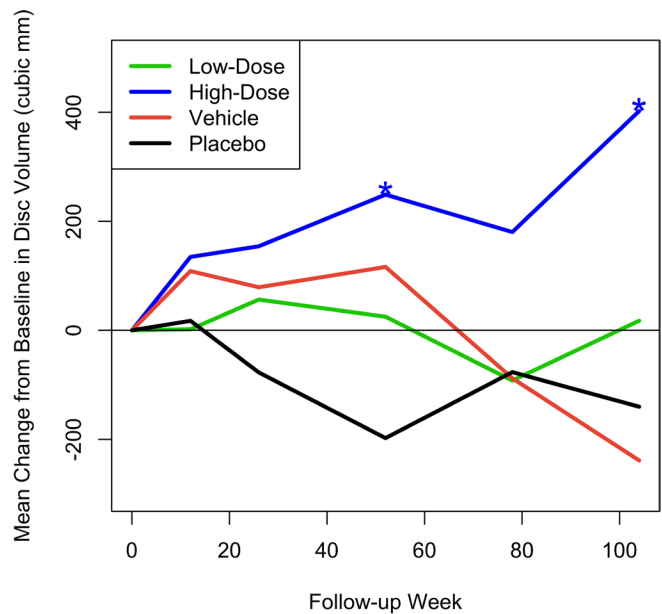


**Figure 3.** Mean change from baseline across time in Oswestry Disability Index (ODI) for the 4 treatment groups. Asterisks denote statistically significant improvement compared with a minimal clinically important difference (MCID) of -15.

demonstrated a mean change that was statistically greater than the MCID at weeks 12, 26, 78, and 104. Importantly, the high-dose IDCT group decreased from the “severe disability” range to the “minimal disability” range by week 78; this improvement was maintained at week 104. The mean change from baseline in EQ-5D index score was statistically significantly greater than the MCID of 0.08 in the high-dose IDCT group, beginning at week 12 (0.194 [0.116, 0.272],  $P = 0.008$ ) and maintained to week 104. The low-dose IDCT group



**Figure 4.** Mean change from baseline across time in EQ-5D Health Index for the 4 treatment groups. Asterisks denote statistically significant improvement compared with a minimal clinically important difference (MCID) of +0.08.



**Figure 5.** Mean change from baseline in disc volume (mm<sup>3</sup>). Asterisks denote statistically significant change.

exhibited improvement in EQ-5D score greater than the MCID at week 104 (0.143 mm,  $P = 0.023$ ).

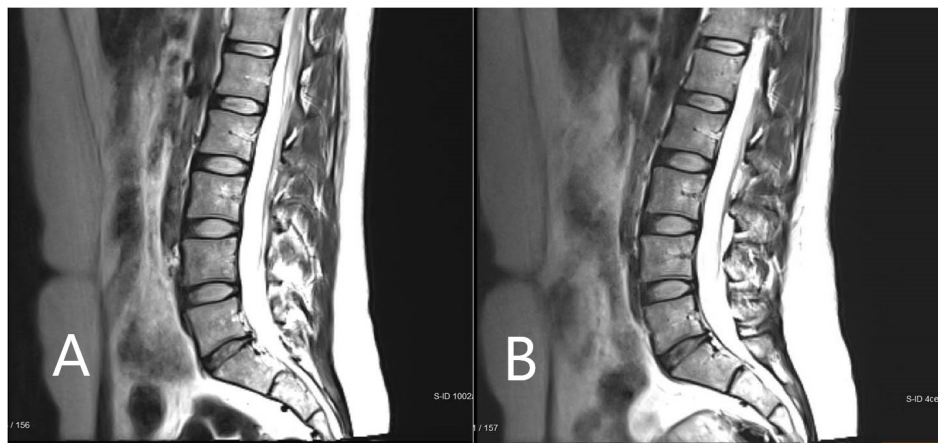
### Radiology

Figure 5 shows the mean change from baseline in MRI measurement of disc volume. This was calculated by an independent imaging core laboratory using a validated, automated method. Only the high-dose group had a statistically significant change over baseline, with volume increase reaching significance at the 52-week endpoint (mean change = 249.01 mm<sup>3</sup>,  $P = 0.028$ ) and continuing to increase further by the 104-week final assessment (mean change = 402.12 mm<sup>3</sup>,  $P = 0.028$ ). Figure 6 presents an MRI scan of a 35-year-old woman with single-level disc pathology at L5-S1, a posterior annular tear, and loss of disc height seen 14 years after a motor vehicle accident. Disc height improved at 6 months after high-dose IDCT and disc volume clearly increased.

### Safety

The overall incidence of treatment-emergent AEs reported during the study was lowest in the high-dose IDCT group, highest in the vehicle and placebo groups, and included back pain, injection site pain, hypoesthesia, paresthesia, extremity pain, muscle spasms, and others. The majority of patients with AEs experienced events of mild or moderate intensity. Overall, 26.7% of patients experienced back pain, which was considered to be not related to the study drug (cell therapy), while





**Figure 6.** Magnetic resonance imaging scan of a study participant with single-level disc pathology at L5-S1 at (A) baseline and (B) 6 months after high-dose injectable disc cell therapy. Disc height and volume increased by 6 months.

25% experienced back pain reported as related to the study drug. VAS and ODI scores did not worsen by >30 points in any study group. A minority (18.3%) of AEs were reported as severe, and a minority of these (6.7% overall) were treatment-emergent SAEs, all of which were experienced by patients in the vehicle ( $n = 1$ ) or placebo groups ( $n = 3$ ). There were no deaths during the study and no events that led to study withdrawal. Overall, clinical laboratory values and vital signs did not change notably over time and were similar across treatment groups.

## DISCUSSION

Disc degeneration is a chronic, progressive disease that is characterized by the breakdown of extracellular matrix molecules in the disc. This breakdown is due to the depleted capacity of local cells to produce new matrix as well as an imbalance in the anabolic and catabolic influences on disc tissue.<sup>7</sup> These changes result in structural disc alterations that may result in acute and chronic pain. IDCT is an allogeneic cell therapy/device combination product that is a mixture of progenitor cells and a viscous delivery vehicle. The active ingredient of IDCT is a live cell population known as discogenic cells, which are human progenitor cells generated from adult intervertebral disc tissue. In this study, treatment with IDCT was effective and well tolerated.

Overall, the most sustained, clinically meaningful reductions in low back pain were observed in the high-dose IDCT group, and this reduction in pain was accompanied by improvements in patient function (indicated by decreased levels of disability), quality of life, and disc volume. In particular, the high-dose IDCT group, and only this group, showed a reduction from baseline in back pain VAS that was statistically significantly greater

than an MCID of  $-20$  mm at week 52. The greatest and most rapidly evolving changes from baseline in ODI were observed for the high-dose IDCT group, and these changes were maintained to week 104. Change in ODI was significantly greater than the MCID of  $-15$  points for only the high-dose IDCT group and decreased from the “severe disability” range to the “minimal disability” range by week 78, where it was maintained at week 104. Change in EQ-5D index score was significantly greater than MCID in only the high-dose IDCT group, beginning at week 12 and maintained to week 104.

Statistically significant improvements from baseline in disc volume were only observed in the high-dose IDCT group. Mean disc volume in this group increased steadily from baseline, and this change reached statistical significance at week 52 and week 104. There were no statistically significant differences between treatments in the number of and time to lumbar spine surgical interventions.

Low-dose IDCT also had a therapeutic effect meeting statistical significance for VAS at weeks 26 and 104 and EQ-5D at week 104, although these effects did not occur as quickly or as robustly as was seen with high-dose IDCT. Overall, both the low and high doses of IDCT were safe and well-tolerated, demonstrating that IDCT can be safely injected into a degenerated lumbar disc for the treatment of symptomatic DDD. The few SAEs all occurred in the control groups.

New matrix generation is one of the mechanisms of action for IDCT. The generation of extracellular matrix has been observed in animal studies through histology<sup>13</sup> and confocal imaging of cells, as well as via quantitative evaluation of gene expression through real-time polymerase chain reaction. Also, the ability of the cells to generate proteoglycans, which help drive disc



hydration, has been quantified using a biochemical assay. This includes the important proteoglycan, aggrecan, which has been measured in a protein assay.<sup>15</sup> Discogenic cells are allogeneic, as they are derived from adult human organ donors. However, we have observed that discogenic cells appear to be immune-privileged. First, human discogenic cells have been implanted into animals, and no immune response has been noted despite a lack of immune suppression in these animals. Second, discogenic cells have been combined with peripheral blood mononuclear cells in mixed lymphocyte reactions, and minimal concomitant peripheral blood mononuclear cell proliferation was noted (which is consistent with a lack of rejection/immune response). Two possible mechanisms for this immunological evasion are proposed. First, the cells are major histocompatibility complex class I positive (HLA-ABC) and major histocompatibility complex class II negative (HLA-DR/DP/DQ), making them hypoimmunogenic. Second, discogenic cells lack expression of co-stimulatory molecules CD40, CD80, and CD86, which are required for effector T cell induction.<sup>13,15</sup> The cells do not form tumors in vitro or in vivo. Studies testing human IDCT in animal models of disc degeneration have shown IDCT to be safe and bioactive.

The primary limitation of this study was the relatively small number of patients, as it was a Phase I/II industry-sponsored clinical trial. Even so, statistically significant differences were consistently observed over a variety of outcome measures. A Phase III clinical trial is scheduled to begin in 2024.

## CONCLUSIONS

In this combined Phase I and Phase II FDA-approved clinical trial, high-dose allogeneic disc progenitor cell therapy was safe, was well tolerated, and significantly increased disc volume. The high-dose patients had clinically meaningful, statistically significant improvement beyond MCID in VAS, ODI, and EQ-5D by 12 weeks. Clinical improvement was sustained at 6 months, 1 year, 1.5 years, and 2 years following a single intradiscal injection. These data suggest that high-dose IDCT may be a safe and effective treatment for symptomatic DDD, producing the most rapid, sustained, and clinically meaningful outcomes in this study. In the low-dose IDCT group, there was a trend in the improvement of clinical outcomes, though this finding was inconsistent. While the vehicle resulted in some pain relief, it was not associated with clinically meaningful improvements in function or quality of life. No consistent or durable statistically significant or clinically meaningful outcomes

were observed in the placebo group. The promising results of high-dose IDCT in this study, particularly the sustained decrease in low back pain and improvements in function, quality of life, and disc volume, support further development of this therapy.

## ACKNOWLEDGMENTS

Karen I. Berliner, PhD, helped with manuscript preparation and editing.

## REFERENCES

1. Davis MA, Onega T, Weeks WB, Lurie JD. Where the United States spends its spine dollars. *Spine*. 2012;37(19):1693–1701. doi:10.1097/BRS.0b013e3182541f45
2. Driscoll T, Jacklyn G, Orchard J, et al. The global burden of occupationally related low back pain: estimates from the global burden of disease 2010 study. *Ann Rheum Dis*. 2014;73(6):975–981. doi:10.1136/annrheumdis-2013-204631
3. Hoy D, March L, Brooks P, et al. The global burden of low back pain: estimates from the global burden of disease 2010 study. *Ann Rheum Dis*. 2014;73(6):968–974. doi:10.1136/annrheumdis-2013-204428
4. Vos T, Flaxman AD, Naghavi M, et al. Years lived with disability (YLDs) for 1160 sequelae of 289 diseases and injuries 1990–2010: a systematic analysis for the global burden of disease study 2010. *The Lancet*. 2012;380(9859):2163–2196. doi:10.1016/S0140-6736(12)61729-2
5. Elfering A. Spinal disorders: fundamentals of diagnosis and treatment. In: Boos N, Aebi M, eds. *Epidemiology and Risk Factors of Spinal Disorders*. New York: Springer; 2008:153–173. doi:10.1007/978-3-540-69091-7
6. DePalma MJ, Ketchum JM, Saullo T. What is the source of chronic low back pain and does age play a role. *Pain Med*. 2011;12(2):224–233. doi:10.1111/j.1526-4637.2010.01045.x
7. Pattappa G, Li Z, Peroglio M, Wismer N, Alini M, Grad S. Diversity of intervertebral disc cells: phenotype and function. *J Anat*. 2012;221(6):480–496. doi:10.1111/j.1469-7580.2012.01521.x
8. Kaner T, Songur A, Toktaş M, Alkoç OA, Eser O, Efendioglu M. Comparison of disc and body volumes in degenerated and nondegenerated lumbar discs: a stereological study. *Turk J Med Sci*. 2014;44(2):237–242. doi:10.3906/sag-1208-45
9. Wuertz K, Haglund L. Inflammatory mediators in intervertebral disk degeneration and discogenic pain. *Global Spine J*. 2013;3(3):175–184. doi:10.1055/s-0033-1347299
10. Dutmer AL, Schiphorst Preuper HR, Soer R, et al. Personal and societal impact of low back pain: the groningen spine cohort. *Spine*. 2019;44(24):E1443–E1451. doi:10.1097/BRS.0000000000003174
11. Hashimoto K, Aizawa T, Kanno H, Itoi E. Adjacent segment degeneration after fusion spinal surgery—a systematic review. *Int Orthop*. 2019;43(4):987–993. doi:10.1007/s00264-018-4241-z
12. Mesregah MK, Yoshida B, Lashkari N, et al. Demographic, clinical, and operative risk factors associated with post-operative adjacent segment disease in patients undergoing lumbar spine fusions: a systematic review and meta-analysis. *Spine J*. 2022;22(6):1038–1069. doi:10.1016/j.spinee.2021.12.002



13. Silverman LI, Dulatova G, Tandeski T, et al. In vitro and in vivo evaluation of discogenic cells, an investigational cell therapy for disc degeneration. *Spine J.* 2020;20(1):138–149. doi:10.1016/j.spinee.2019.08.006
14. Schulz KF, Altman DG, Moher D. Statement: updated guidelines for reporting parallel group randomised trials. *Ann Intern Med.* 2010;152(11):726–732. doi:10.7326/0003-4819-152-11-201006010-00232
15. Rodriguez-Granrose D, Zurawski J, Heaton W, et al. Transition from static culture to stirred tank bioreactor for the allogeneic production of therapeutic discogenic cell spheres. *Stem Cell Res Ther.* 2021;12(1):455. doi:10.1186/s13287-021-02525-0
16. Hägg O, Fritzell P, Nordwall A. The clinical importance of changes in outcome scores after treatment for chronic low back pain. *Eur Spine J.* 2003;12(1):12–20. doi:10.1007/s00586-002-0464-0
17. Olsen MF, Bjerre E, Hansen MD, Tendal B, Hilden J, Hróbjartsson A. Minimum clinically important differences in chronic pain vary considerably by baseline pain and methodological factors: systematic review of empirical studies. *J Clin Epidemiol.* 2018;101:87–106. doi:10.1016/j.jclinepi.2018.05.007
18. Ostelo R, de Vet HCW. Clinically important outcomes in low back pain. *Best Practice & Research Clinical Rheumatology.* 2005;19(4):593–607. doi:10.1016/j.berh.2005.03.003
19. Fairbank JCT, Pynsent PB. The Oswestry Disability Index. *Spine.* 2000;25(22):2940–2953. doi:10.1097/00007632-200011150-00017
20. Euroqol Research Foundation. *EQ-5D-5L User Guide.* 2019. <https://euroqol.org/publications/user-guides>. Accessed January 2017.
21. Copay AG, Glassman SD, Subach BR, Berven S, Schuler TC, Carreon LY. Minimum clinically important difference in lumbar spine surgery subjects: a choice of methods using the oswestry disability index, medical outcomes study questionnaire short form 36, and pain scales. *Spine J.* 2008;8(6):968–974. doi:10.1016/j.spinee.2007.11.006
22. Lauridsen HH, Hartvigsen J, Manniche C, Korsholm L, Grunnet-Nilsson N. Responsiveness and minimal clinically important difference for pain and disability instruments in low back pain subjects. *BMC Musculoskelet Disord.* 2006;7:82. doi:10.1186/1471-2474-7-82
23. Maughan EF, Lewis JS. Outcome measures in chronic low back pain. *Eur Spine J.* 2010;19(9):1484–1494. doi:10.1007/s00586-010-1353-6
24. Suzuki H, Aono S, Inoue S, et al. Clinically significant changes in pain along the pain intensity numerical rating scale in subjects with chronic low back pain. *PLOS One.* 2020;15(3):e0229228. doi:10.1371/journal.pone.0229228

**Funding:** The clinical trial was sponsored and funded by DiscGenics, Inc., Salt Lake City, UT.

**Declaration of Conflicting Interests:** Dr. Foley discloses that he has a patent relationship to the product in this study, stock options, and is the Chief Medical Officer and on the Board of Directors of the study sponsor. Drs. Beall, Davis, and DePalma report research funding from the sponsor as investigational sites. Dr. Kelly was the independent statistical consultant to the study sponsor for this study. None of the other authors report conflicts of interest related to this study. Additional unrelated financial disclosures and conflicts of interest are listed in the supplementary file 1.

**Presentations:** Portions of this work were presented at the North American Spine Society 37th Annual Meeting (2022), American Academy of Neurological Surgery 84th Annual Meeting (2022), Association of Chiropractic Colleges/Research Agenda Conference (2022), American Association of Neurological Surgeons Scientific Meeting (2022), American Society of Pain and Neuroscience 5th Annual Conference (2022), Congress of Neurological Surgeons Annual Meeting (2022), and International Society for Cell and Gene Therapy (2022).

**IRB Approval:** By sponsor—Advarra IRB, assurance #00023875. Each investigator site also obtained IRB approval.

**Corresponding Author:** Kevin T. Foley, Semmes-Murphey Clinic & Department of Neurosurgery, University of Tennessee Health Science Center, 6325 Humphreys Blvd, Memphis, TN 38120, USA; [kfoley@semmes-murphey.com](mailto:kfoley@semmes-murphey.com)

Published 05 June 2024

This manuscript is generously published free of charge by ISASS, the International Society for the Advancement of Spine Surgery. Copyright © 2024 ISASS. To see more or order reprints or permissions, see <http://ijssurgery.com>.