

## A Multiscale Finite Element Analysis of Balloon Kyphoplasty to Investigate the Risk of Bone-Cement Separation In Vivo

Philip Purcell, Magdalena Tyndyk, Fiona McEvoy, Stephen Tiernan, Derek Sweeney and Seamus Morris

*Int J Spine Surg* published online 1 April 2021  
<https://www.ijssurgery.com/content/early/2021/03/30/8040>

This information is current as of July 14, 2024.

---

**Email Alerts** Receive free email-alerts when new articles cite this article. Sign up at:  
<http://ijssurgery.com/alerts>

# A Multiscale Finite Element Analysis of Balloon Kyphoplasty to Investigate the Risk of Bone-Cement Separation In Vivo

PHILIP PURCELL,<sup>1,2,3</sup> MAGDALENA TYNDYK,<sup>4</sup> FIONA McEVOY,<sup>1</sup> STEPHEN TIERNAN,<sup>1</sup> DEREK SWEENEY,<sup>2</sup> SEAMUS MORRIS<sup>5</sup>

<sup>1</sup>Bioengineering Technology Centre, Technological University Dublin, Tallaght Campus, Dublin, Ireland, <sup>2</sup>CADFEEM Ireland, The Steelworks, Dublin, Ireland, <sup>3</sup>Department of Electronic and Mechanical Engineering, Dundalk Institute of Technology, Dundalk, Ireland, <sup>4</sup>University College Cork, UCC Academy, Cork, Ireland, <sup>5</sup>Mater Misericordiae University Hospital, National Spinal Injuries Unit, Ireland

## ABSTRACT

**Background:** During the past decade there has been a significant increase in the number of vertebral fractures being treated with the balloon kyphoplasty procedure. Although previous investigations have found kyphoplasty to be an effective treatment for reducing patient pain and lowering cement-leakage risk, there have been reports of vertebral recollapse following the procedure. These reports have indicated evidence of in vivo bone-cement separation leading to collapse of the treated vertebra.

**Methods:** The following study documents a multiscale analysis capable of evaluating the risk of bone-cement interface separation during lying, standing, and walking activities following balloon kyphoplasty.

**Results:** Results from the analysis found that instances of reduced cement interlock could initiate both tensile and shear separation of the interface region at up to 7 times the failure threshold during walking or up to 1.9 times the threshold during some cases for standing. Lying prone offered the best protection from interface failure in all cases, with a minimum safety factor of 2.95.

**Conclusions:** The results of the multiscale analysis show it is essential for kyphoplasty simulations to take account of the micromechanical behavior of the bone-cement interface to be truly representative of the in vivo situation after the treatment. The results further illustrate the importance of ensuring adequate cement infiltration into the compacted bone periphery during kyphoplasty through a combination of new techniques, tools, and biomaterials in a multifaceted approach to solve this complex challenge.

Biomechanics

Keywords: kyphoplasty, vertebral compression fractures, multiscale finite element analysis, micro-CT, bone-cement interface

## INTRODUCTION

Since the advent of balloon kyphoplasty for the treatment of vertebral compression fractures in 1998, the rate of uptake by clinicians has significantly increased, with an average of 45 000 cases per annum during a 5-year period in the United States alone.<sup>1,2</sup> The procedure was introduced as an improvement on first-generation vertebroplasty, which was predominantly focused on fracture stabilization rather than deformity correction. Kyphoplasty provides active deformity correction by using an inflatable balloon to decompress the collapsed vertebra. A further benefit of the balloon expansion process has been an associated reduction in the incidence of cement leakage due to the reduced injection pressure of cement into the cavity

created by the balloon.<sup>3</sup> In tandem with the high rate of use by clinicians, a significant volume of corresponding literature has been documented regarding the efficacy of the treatment in reducing patient pain.<sup>4,5</sup> Whereas restoration of mechanical factors such as vertebral height, strength, and stiffness have also been extensively studied after the treatment, a universal consensus on the sustainability of these improvements remains absent.<sup>6–10</sup>

Adjacent-level fractures constitute one of the most discussed aspects of the treatment, with several studies indicating a high rate of additional fractures ranging from 14%–33% within the initial 60–90 days after the treatment.<sup>11–16</sup> It has been further suggested that an elevated risk of recurrent fracture exists after kyphoplasty compared with the natural

course of progression.<sup>13,14</sup> Whereas many of these studies have previously focused on the integrity of the adjacent vertebrae, there are an increasing number of reports that indicate the potential for recollapse of the treated vertebra itself after surgery.<sup>12,17–20</sup> Many authors have attributed these recollapse events to an insufficient mechanical interlock between the host bone and the injected cement.<sup>17,19</sup>

This hypothesis has been supported by evidence of discontinuity between the injected cement and the surrounding bone *in vivo* through the use of dynamic radiographs.<sup>20</sup> Another radiological study of 175 kyphoplasty cases also indicated a 78% rate of recollapse in patients with an observable “halo” at the interface between the host bone and injected cement within 7 days of the treatment.<sup>12</sup> A likely factor contributing to these occurrences may be the reduced cement interdigitation achieved by kyphoplasty due to compaction of the trabecular bone by the balloon, which creates a barrier to cement infiltration.<sup>21–23</sup> These findings are further supported by postmortem histological studies that have observed a thin fibrous membrane and necrotic bone adjacent to the compacted region.<sup>24</sup> Combined with the knowledge that many fractures occur before bone repair has matured, it is likely that this creates an environment that facilitates recollapse.<sup>25</sup>

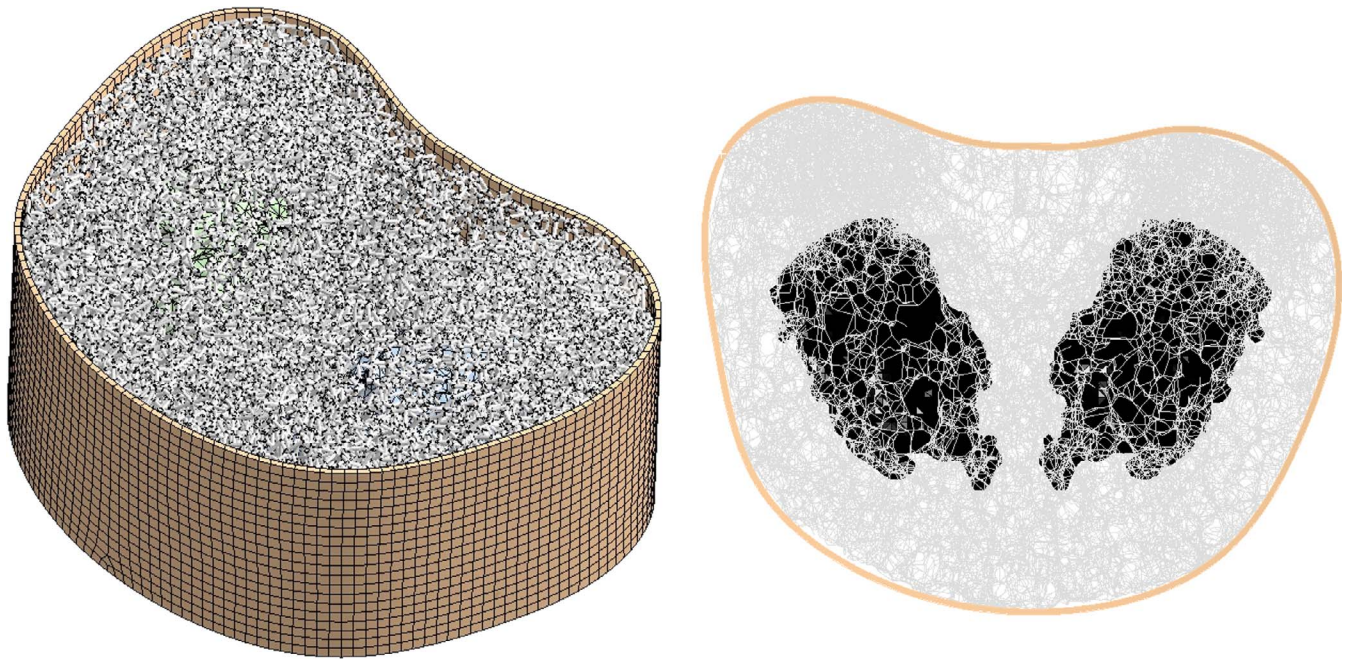
Mechanical evaluations of the bone-cement interface have predominantly focused on hip replacements in which aseptic loosening ranks among the top causes of implant failure.<sup>26,27</sup> Experimental and microfinite element (micro FE) investigations have illustrated the importance of proper cement infiltration into the bone structure to attain a sufficient tensile and shear strength to ensure the integrity of the bone-cement interlock.<sup>28,29</sup> Conversely, compressive strength of the interface has been found to be independent of penetration depth with failure initiating at the interlocks of cement and bone in the partially interdigitated region, where localized trabecular buckling dominates.<sup>30,31</sup> The presence of microscopic gaps between the bone and cement, such as those reported following kyphoplasty,<sup>21</sup> can significantly diminish the interfacial strength even in cases of good interdigitation.<sup>32</sup> Trapped fluid within these microscopic gaps have also been implicated in causing fluid-induced lysis of trabeculae, which can further erode the integrity of the interface.<sup>33</sup>

One of the few studies that specifically examined vertebral trabecular bone augmented with cement found the apparent strength and stiffness of the composite was lower than that of bulk cement.<sup>34</sup> The authors recommended that future macroscale computational models examining cement augmentation should assign specific properties for the bone-cement interface rather than assume a step change from the bone to cement domains without any intermediary properties. To our knowledge only 2 other kyphoplasty models have explicitly represented the interface as a layer of elements surrounding the cement with an intermediary modulus assigned.<sup>35–38</sup> The majority of macroscale kyphoplasty simulations instead assume an instantaneous transition of elastic properties from bone to cement via shared node bonding of the domains.<sup>39–43</sup> These assumptions would not have been deemed unreasonable before the more recent *in vivo* observations of bone-cement interface separation. These clinical reports require consideration that modeling the complex mechanical behavior of the interface requires specific attention to reliably evaluate changes in the load distribution of treated spine segments.

A complete mechanical appraisal of the kyphoplasty treatment thus necessitates the development of a multiscale model capable of capturing both the global spine mechanics in tandem with the complex micromechanical interaction of the bone-cement interface. The current study aims to provide such a model to assess whether *in vivo* loading conditions following kyphoplasty could be sufficient to initiate separation of the bone-cement interface during normal daily activities such as walking.

## METHODS

Two stages of computational modeling were required to determine whether spine segment loads during normal daily living could induce separation of the bone-cement interface. In the first part, a micro FE model of a treated vertebral body with a strain-dependent material model was developed to establish the tensile (Mode I) and shear (Mode II) properties of the interface. Results from this analysis were then used in the second part to define the contact properties of a macroscale spine model subjected to lying, standing, and walking loads after treatment with kyphoplasty.



**Figure 1.** Micro FE model of bilateral kyphoplasty with beam and solid elements. FE, finite element.

### Generation and Setup of Microscale Computational Models

Creation of the micro FE model of kyphoplasty used an open-source image processing package ImageJ<sup>44,45</sup> and a freely available dataset for an L3 vertebral body.<sup>46</sup> After thresholding of the data, binary image subtraction was used to bilaterally locate 2 cement volumes that were scanned in a previous kyphoplasty study with a resolution of 32  $\mu\text{m}$ . A 3-dimensional thinning algorithm was applied to generate a skeletonized representation of the bone structure, which would be otherwise too complex to generate a feasible solid element mesh.<sup>47</sup> The skeletonized structure (Figure 1) was subsequently converted into a beam element model using custom code written in ANSYS Advanced Parametric Design Language (APDL). Each beam element was assigned a circular cross-section such that the volume of the original bone structure and the beam-element model were equivalent. Meanwhile, the cement and cortical shell were meshed using solid tetrahedral and hexahedral elements, respectively. Connection between the beam and

solid elements was established using translational degree of freedom coupling for nodes nearest the beam-solid interfaces, referred to as *full interlock*. The effect of reducing the number of coupling points at the bone-cement interface by 90% was also studied to simulate cases of poor cement interlock, a process referred to herein as *reduced interlock*.

Material properties for the bone structure were applied using a previously documented strain-controlled modulus reduction algorithm capable of representing the stiffness loss due to material damage.<sup>48-51</sup> The stress-strain relation described by Equation 1 allows a continuous nonlinear transition from elastic to perfectly plastic behavior. The material model was incorporated into the ANSYS solver using the USERMAT subroutine.

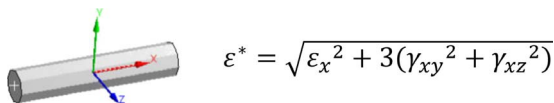
$$\sigma = \sigma_0 \left[ \tanh \left( \frac{E_0 \varepsilon^*}{\sigma_0} \right)^m \right]^{\frac{1}{m}} \quad (1)$$

$$\frac{d\sigma}{d\varepsilon^*} = -\sigma_0 \beta \left[ \tanh \beta^{\frac{m+1}{m}} - \tanh \beta^{\frac{1-m}{m}} \right]^{\frac{1}{m}}, \quad (2)$$

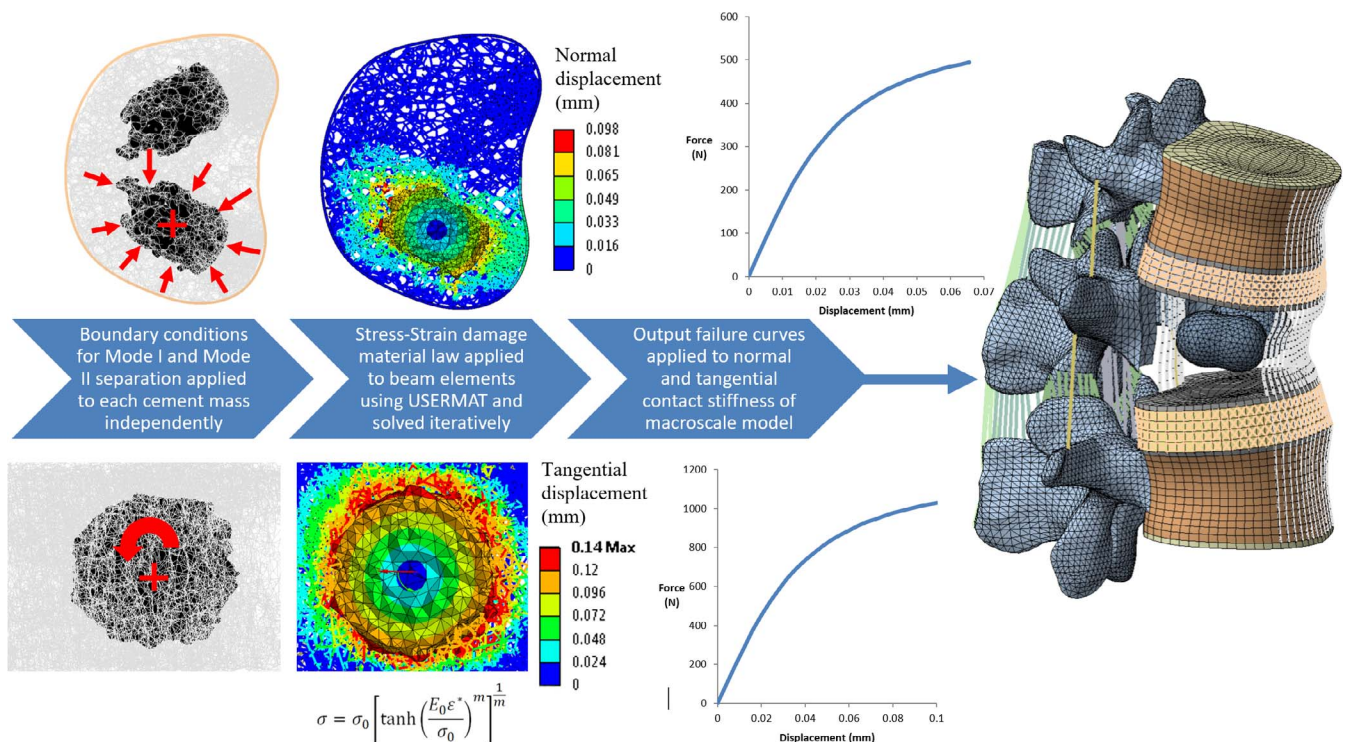
where  $\beta = [E_0 \varepsilon^* / \sigma_0]^m$ ;  $E_0 = 15 \text{ GPa}$ ;  $\nu = 0.3$ ;  $\sigma_0 = 70 \text{ MPa}$ ; and  $m = 1$ .

And the equivalent strain  $\varepsilon^*$  for the ANSYS BEAM188 element was derived using the von Mises criteria as follows (see Figure 2).

Mode I tensile separation of the interface was modeled by applying a uniform volumetric reduction of each cement mass about its centroid, as



**Figure 2.** BEAM188 element coordinate system and equivalent strain computation.



**Figure 3.** Generation of beam element models after skeletonization of computed tomography data and applied boundary conditions for Mode I tensile and Mode II shear separation. Failure curves output from the micro FE analysis were applied in the macroscale model by explicitly defining the normal and tangential contact stiffness between the bone and cement domains. FE, finite element.

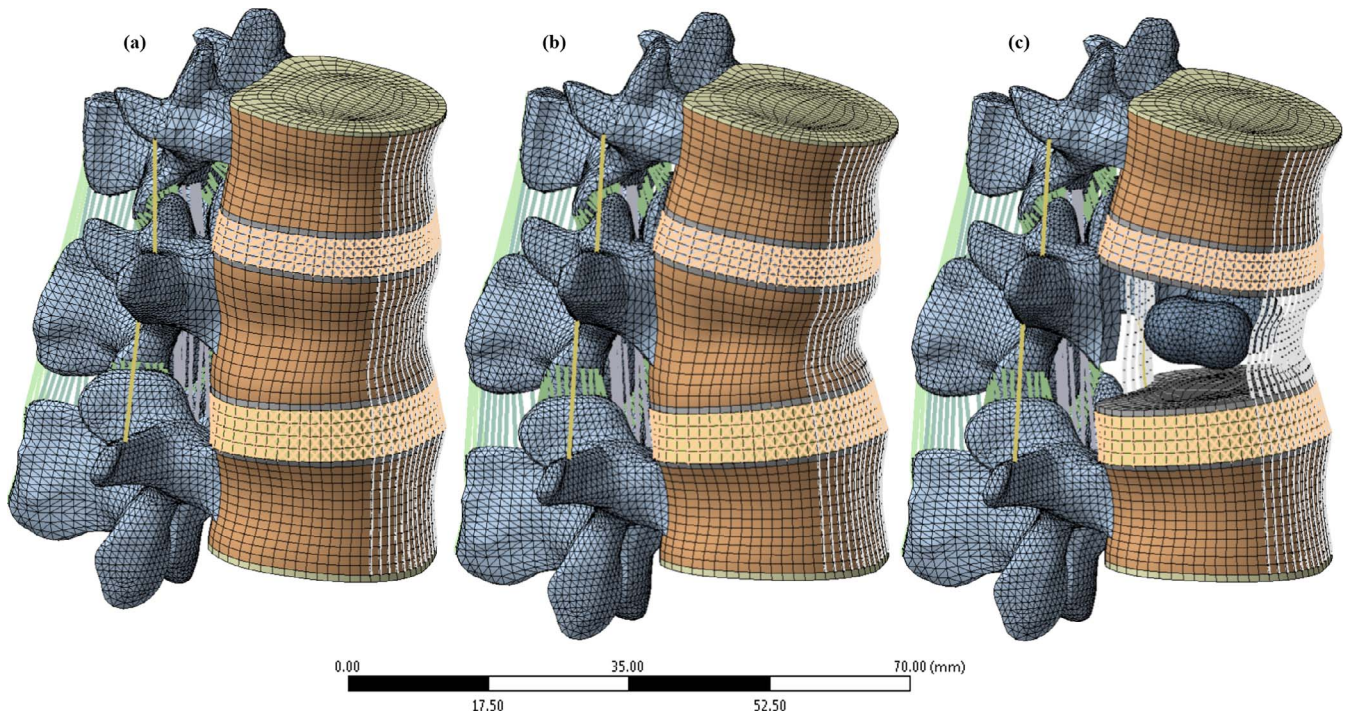
illustrated in Figure 3. Applying such a condition induced a displacement towards the cement centroid, thus simulating tensile separation of the interface. Mode II shear separation was simulated by applying a tangential rotation to the cement mass within the trabecular structure, thereby inducing shear at the interface. All boundary conditions were applied iteratively in 25 equal steps. Nodal displacements and reaction forces of the interface region were extracted during each analysis step to enable the corresponding macroscale stiffness and strength properties to be calculated for each mode of separation. Strength properties were derived on the basis of the reaction loads at which stiffness loss reached 90%, along with the corresponding surface areas of each cement mass.

### Generation and Setup of Macroscale Computational Models

The macroscale part of the analysis used a finite element model of the thoracolumbar spine that has been extensively documented and validated directly with an experimental study that included the specimen from which the model was built.<sup>52–54</sup> For the present analysis, the model was reduced to 2 motion segments (Figure 4) centered on the first

lumbar vertebra (L1). Alterations to the validated model setup were minimized by retaining the same mesh and reference nodes for application of the boundary conditions; whereas, geometric modification was limited solely to the interior L1 trabecular compartment. A bilateral kyphoplasty treatment was replicated in the model by remeshing the interior of the L1 trabecular compartment to include 2 cement masses while maintaining connectivity with the surrounding original mesh. Numerical verification of stress results for the remeshed region was achieved using the nodal fraction quantity in ANSYS, which enabled the magnitude of stress-field discontinuity to be evaluated. Using this approach ensured that the integrity of the previously conducted validation studies of the model were retained.<sup>55</sup>

The completed model consisted of 3 vertebrae articulating between 2 pairs of fiber-reinforced discs and 4 facet joints with frictionless surface-to-surface contact. The 9 ligaments of the spine were also included with either variable (COMBIN39) or constant stiffness (LINK180) tension-only struts that serve to stabilize the structure (Table 2). The nucleus pulposus of the intervertebral discs were modeled using incompressible hydrostatic fluid



**Figure 4.** (a) Finite element model of thoracolumbar junction T12-L1-L2 in healthy intact state. (b) Model with simulated wedge fracture at L1. (c) Wedged model with bilateral kyphoplasty at L1 with cortical and trabecular components hidden for clarity.

elements (HSFLD242). The surrounding annulus matrix, meanwhile, used a Mooney-Rivlin hyperelastic formulation reinforced with 4 layers of fibers with varying stiffness from the inner to outermost rings (properties in Table 1).

Two cement volumes of 2 mL and 6 mL were modeled to examine the influence of cement volume on separation characteristics. These models were paired with a further 2 configurations either with or without consideration of the fracture shape, thus resulting in a total of 4 kyphoplasty models. The 2 models without fracture simulation remained consistent with the healthy intact model, except for the addition of 2 bilateral cement masses. Incomplete restoration was simulated in the fractured models by applying a 10° wedge angle to the treated vertebra along with replication of a Magerl type A3 fracture

pattern by assigning a reduced modulus of 15 MPa to the elements along the fracture path.<sup>56,57</sup>

Modeling separation of the bone-cement interface required the meshes of the injected cement and the surrounding trabecular bone to be created independently without sharing any element connectivity. Load transfer between the 2 domains was instead achieved using a penalty-based contact formulation with CONTA174 and TARGE170 contact elements that were overlaid on the free faces of the elements at the interface. The normal and tangential stiffness of the interface bond was then assigned using the results of the micro FE study, thus incorporating the micromechanical response of the interface into the macroscale model.

To maintain consistency with the boundary conditions applied in the original validation study,

**Table 1.** Summary table of 3-dimensional solid element types and material properties in macroscale model.

Component	ANSYS Element Type	Young's Modulus, MPa	Poisson Ratio	Study
Cortical bone	SOLID185-8-node hexa	12 000	0.3	Tyndyk et al <sup>52</sup>
Trabecular bone	SOLID185/187-8 node hexa, 10-node tetra (L1)	344	0.2	Tyndyk et al <sup>52</sup>
Neural arch	SOLID185-8-node hexa	3500	0.3	Tyndyk et al <sup>52</sup>
Endplate	SOLID185-8-node hexa	1000	0.3	Tyndyk et al <sup>52</sup>
Cement	SOLID187-10-node tetra	2951	0.35	N/A
Annulus matrix	SOLID185-8-node hexa	Mooney-Rivlin hyperelastic $C_{10} = 0.56$ MPa, $C_{01} = 0.14$ MPa, $D_o = 0.142857$		Schmidt et al <sup>61</sup>
Nucleus pulposus	HSFLD242-5-node hydrostatic fluid element	Incompressible fluid		N/A

**Table 2.** Soft tissue properties for macroscale model.

Component	ANSYS Element Type	Area, mm <sup>2</sup>	Young Modulus (MPa)	Study
AF	LINK180–tension only	0.5	360 (innermost), 420, 485, 550 (outermost)	Polikeit et al <sup>62</sup>
ITL	LINK180–tension only	5.0	54.4	Tyndyk et al <sup>52</sup>
CL	LINK180–tension only	48.4	24.4	Tyndyk et al <sup>52</sup>
ISL	LINK180–tension only	42.7	16.9	Tyndyk et al <sup>52</sup>
SSL	LINK180–tension only	38.9	34.1	Tyndyk et al <sup>52</sup>
ALL	COMBIN39–tension only		Nonlinear force deflection data from Larsen <sup>63</sup>	
PLL	COMBIN39–tension only		Nonlinear force deflection data from Larsen <sup>63</sup>	
LF	COMBIN39–tension only		Nonlinear force deflection data from Larsen <sup>63</sup>	

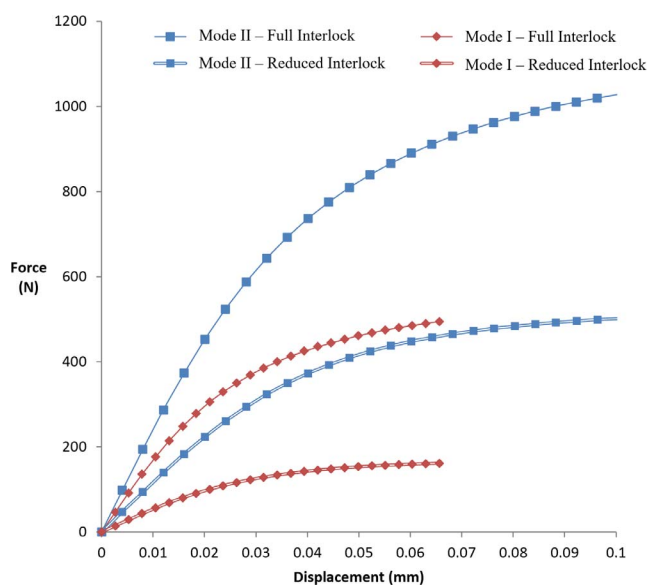
Abbreviations: AF, annulus fibers; ALL, anterior longitudinal ligament; CL, capsular ligament; ISL, interspinous ligament; ITL, intertransverse ligament; LF, ligamentum flavum; PLL, posterior longitudinal ligament; SSL, supraspinous ligament.

lying and standing conditions were replicated in the model by fully constraining the inferior endplate of L2 while follower loads of 144 N and 800 N were applied through reference nodes on the sides of each vertebral body.<sup>58</sup> The applied follower-load direction remained aligned with the spinal curvature by iteratively updating the local coordinate system of the reference nodes until the motion segments reached their final equilibrium positions. Walking was simulated on the basis of in vivo data by increasing the follower load by a further 30% to 1140 N in conjunction with applying a torsional moment of 7.5 Nm to the superior endplate of T12.<sup>59,60</sup>

## RESULTS

### Micro FE Model

Results for the tensile (Mode I) and shear (Mode II) separation simulations presented in Figure 5 show the failure responses before and after applica-



**Figure 5.** Mean bone-cement interface separation response for the cement masses with full interlock and reduced interlock applied.

tion of the reduced interlock criteria (outlined in the “Generation and Setup of Microscale Computational Models” section). Examination of the responses for each loading mode illustrates the increased resistance of the structure to shear separation compared with tensile separation.

Comparison of the data presented in Table 3 shows shear strength and stiffness were reduced by amounts of 50.5%–53.1% and 45.9%–46.5%, respectively, when poor cement interlock was simulated. Tensile separation behavior exhibited greater reductions in stiffness spanning 66.1%–63.3%, whereas strength values showed comparable decreases of 66.4%–68.9%. Shear strength was consistently higher than tensile strength by a factor of approximately 2 with full interlock, increasing to a factor of 3 under reduced interlock conditions. Corresponding relations for shear stiffness showed similar trends, with factors of approximately 1.4 with full interlock applied and up to 2.15 with reduced interlock.

### Macroscale Model

Stress results from the macroscale models for each mode of separation with full and reduced interlock properties applied are presented in Figures 6–9. These macroscale stress results were normalized against the predicted failure strength from the micro FE analyses for the particular mode of loading and interlock configuration, as outlined in Table 3.

#### Macroscale Model With Full Interlock

Walking loads were predicted to induce separation of the interface with stresses exceeding the threshold by factors of 2.04–3.3 for tension and 3.6–7 for shear. Conversely, lying and standing loads were predicted to be within the failure threshold for all full interlock cases with factors ranging from 0.094–0.804. Load factors were generally higher for shear than tension by an average of 81% for all

**Table 3.** Comparison of mechanical properties between full and reduced interlock simulations.

	Full Interlock				Reduced Interlock			
	Tensile, Mode I		Shear, Mode II		Tensile, Mode I		Shear, Mode II	
	Left	Right	Left	Right	Left	Right	Left	Right
Failure load, N	523	462	1048	982	163	155	491	486
Displacement at failure, $\mu\text{m}$	65.61	63.03	96.41	92.16	60.36	57.78	84.42	84.20
Failure strength, MPa	0.804	0.709	1.579	1.480	0.250	0.238	0.740	0.732
Stiffness, N/mm	7975	7321	10875	10660	2702	2690	5817	5770

models except for the fractured 6-mL model under lying and standing conditions, which were both lower by approximately 15%. Increasing cement volume lowered shear load factors by an average of 27%, whereas tensile load factors decreased by an average of 17%, excluding the fractured 6-mL model, which indicated a 7% increase.

### Macroscale Model With Reduced Interlock

Application of reduced interlock at the interface increased load factors for all cases by an average of 64%. Walking loads were found to be sufficient to cause failure through both modes of separation and were increased by an additional margin of 37% compared with the full interlock case. Shear load factors exceeded those of tension by an average of 46%, excluding the fractured model configurations with lying and standing conditions applied, which showed decreases up to 52%. Standing loads were sufficient in half of the models studied to induce separation through either tensile or shear loads. In the case of the fractured 2-mL model, both tensile and shear stresses exceeded their allowable limits for standing loads alone. Higher cement volumes were found to lower tensile and shear load factors by an average of 20% excluding the fractured 6-mL model. Lying prone was found to offer the best protection from interface separation, with a mini-

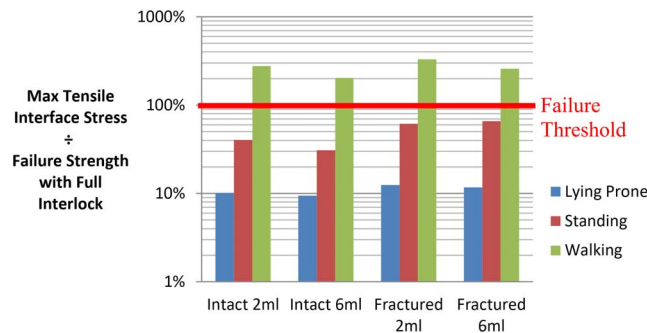
um safety factor of 2.95 for the fractured 6-mL case.

## DISCUSSION

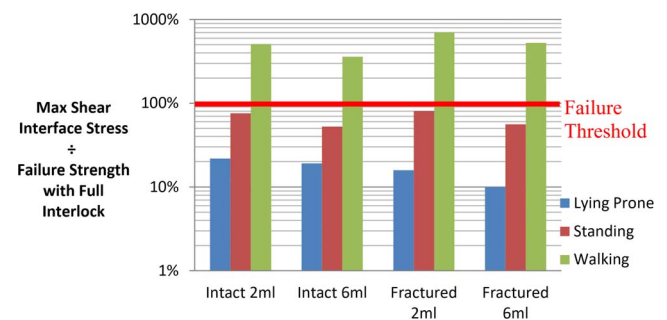
### Micro FE Model

Evaluation of the micro FE results presented in Figure 5 illustrates the impaired ability of the interface region to resist shear and tensile separation in cases of reduced cement interlock. Previous literature reports of lumped mass cement distributions and poor interlock indicate that cases of inhibited bonding are not only possible but potentially prevalent after kyphoplasty.<sup>21–23</sup> Strength reductions ranged from approximately half to two-thirds for shear and tensile loading, respectively, demonstrating the need for macroscale models to account for the micromechanical behavior of the interface. Although replicating poor interlock by reducing the number of coupling points by 90% may seem excessive, clinical reports indicate that such scenarios are indeed feasible in cases of “lumped” cement distributions.<sup>23</sup> To what extent the cement distribution must be lumped to result in a negligible bonding response, however, remains unknown.

Consistent with previous studies of bone-cement interfaces in the human femur, the micro FE analysis of the interface found that the structure was considerably stiffer and stronger in shear than

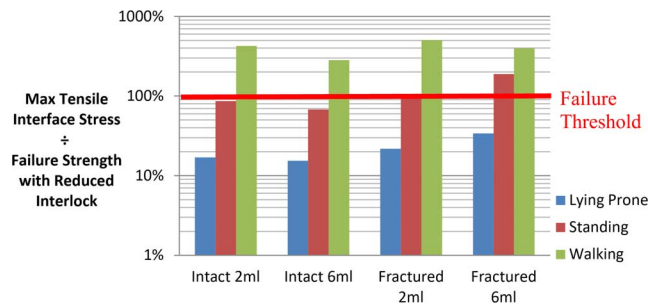


**Figure 6.** Mode I tensile separation stress normalized to failure strength with full interlock.



**Figure 7.** Mode II shear separation stress normalized to failure strength with full interlock.





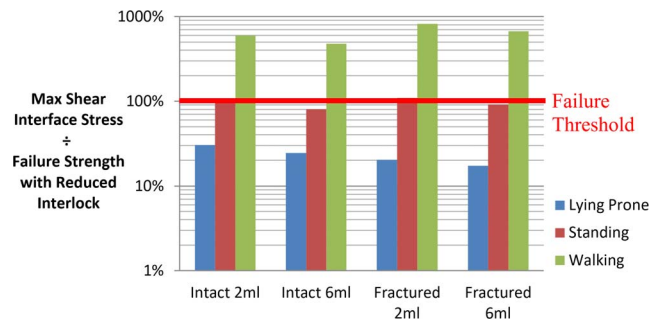
**Figure 8.** Mode I tensile separation stress normalized to failure strength with reduced interlock.

in tension (Figures 6–9).<sup>64</sup> The previous experimental study found shear strength exceeded tensile strength by factors ranging from 1.7–2.5 compared with the present analytical finding of approximately 2.<sup>29,64</sup> Similar trends were observed for the stiffness properties of the interface at 16.2 MPa/mm for shear and 11.8 MPa/mm for tension. These magnitudes were within the range of previous data<sup>29</sup> for penetration levels <1 mm, indicating a shear to tension ratio spanning 1.26–2.06.

A rationale for the apparent disparity between tensile and shear properties has been hypothesized to relate to the pullout mechanism of the interdigitated bone pedicles from the cement mantle. This mechanism has been suggested to be more efficient in the case of tension.<sup>65</sup> We find it interesting that this indicates the mode of failure also likely contains an additional global contribution from the surrounding bone struts because the present micro FE analysis does not explicitly model these pullout mechanisms.

### Macroscale FE Model

Examination of the macroscale model results presented in Figures 6–9 shows a high risk of bone-cement interface separation during walking, even in cases of good interlock. Cases of reduced interlock, meanwhile, were found to present a risk of bone-cement interface separation even during standing loads. The risk of separation was lowest in the case of a vertebra with full deformity correction and a high cement volume. Further investigation of cases of high cement volume found that this behavior was driven by a redistribution of the load over a larger cement area, which in turn reduced the load intensity at each interdigitation site between the trabeculae and the cement mantle, consequently lowering the risk of debonding initiation. Whereas higher cement volumes may reduce the risk of



**Figure 9.** Mode II shear separation stress normalized to failure strength with reduced interlock.

separation, many authors<sup>66,67</sup> have suggested that excessive cement volumes could be detrimental to treatment outcomes. These suggestions have been founded on the hypothesis that larger cement volumes render the treated level excessively stiff, thus elevating the risk of adjacent vertebra failure. More recent investigations have found that any adjacent-level effects are strongly dependent on achieving endplate-to-endplate cement contact, which is often not the case following kyphoplasty.<sup>19,68–70</sup> The latter of these studies found that cases without endplate-to-endplate contact exhibited localized bands of bone damage above and below the cement mass. Furthermore, applying the principles of “weakest link” probability theories such as the Weibull distribution, as often applied to brittle materials, could also suggest that a larger cement volume would increase the number of potential locations at which failure could initiate. Such complexities are, however, beyond the scope of the present study and are instead noted here as a potential path for future study.

The highest risk of interface separation was predicted for models without deformity correction combined with reduced interlock. It is interesting that higher cement volumes in these cases increased the risk of tensile pullout during lying and standing by an average margin of 69% yet reduced the risk during walking by 21%. Consideration of this behavior indicates a contribution of fracture shape to the response because equivalent changes were not observed for the intact models.

Further investigation of this result characteristic revealed a shift in the location of tensile separation from the posterior cement regions to the anterior parts. This was attributable to the reduced constraining capacity of the fractured cortical shell, which, combined with the closer proximity of the cement masses in the 6-mL fill case, intensified

tensile separation loads in the anterior regions of the interface.

An overview of all results from the macroscale analyses indicates a significant risk of overloading the bone-cement interface during the recovery after kyphoplasty at a time when bone remodeling processes are ongoing but have yet to establish viable bone with a load-bearing capacity.<sup>25</sup> Whereas the results would suggest that lying prone offers the best protection against overloading the interface, this is obviously not a suitable solution from a clinical perspective. The results instead highlight the need to develop strategies that ensure adequate cement infiltration into the compacted bone periphery during kyphoplasty such that a mechanically stable interlock can be established. Achieving such an outcome is not a trivial task, however, since improved cement infiltration is usually associated with increased injection pressures and pulmonary embolization risk. Novel approaches to the kyphoplasty procedure such as the “eggshell technique” proposed by Greene et al<sup>71</sup> and radio frequency-augmented kyphoplasty are just 2 examples of techniques that could serve to enhance the properties of the bone-cement interface in a safe manner.<sup>22</sup> Alternative devices such as the Kiva implant and vertebral body stenting, meanwhile, also offer new options for restoring vertebral height in a manner that fundamentally alters the nature of the bone-cement interface and thus may avoid some of the issues highlighted by the present study.<sup>72,73</sup> Furthermore, new biomaterial formulations also may offer the potential of achieving fusion at the interface and ultimately a capacity to remodel with the surrounding trabecular architecture.<sup>74</sup>

### Study Limitations

Results from the present study highlight the importance of characterizing the mechanical behavior of the interface to address clinical observations of bone-cement discontinuity and the subsequent collapse of treated vertebrae. The analyses also show that the risk of interface separation can be significantly mitigated by ensuring sufficient cement infiltration into the compacted bone periphery during kyphoplasty while carefully managing load exposure, given that bone remodeling processes are ongoing but have yet to establish viable bone within the first 8 weeks in particular.<sup>25</sup> Although there is extensive agreement of the computational models with published literature, the following limitations

of both the micro FE and macroscale methods are acknowledged.

Modeling the complete trabecular structure required the use of a skeletonization algorithm to generate a beam element representation of the structure.<sup>47</sup> The use of skeletonization methods has previously been suggested<sup>75-77</sup> as an effective means of accounting for the micro-architectural complexity of trabecular bone while being computationally efficient enough to permit whole bone analyses such as those in the current study. The present study assumed direct connectivity of the skeleton node points using straight beam elements with a circular cross-section. These compromises were deemed reasonable because morphological studies have found vertebral bone to consist predominantly of rod- rather than plate-type trabeculae, unlike the femur where a significant proportion of platelike trabeculae exist.<sup>78</sup>

Parameters for the material model presented in the “Generation and Setup of Microscale Computational Models” section were assigned within the range of previous experimental studies on trabecular tissue with an elastic modulus of 15 GPa and a yield strain of 0.62%, which was controlled by the stress asymptote  $\sigma_0$  and damage index  $m$ .<sup>79,80</sup> Resulting apparent yield strains of 0.88% and stresses of 0.879 MPa for the whole trabecular structure were within the range of experimental data for human vertebral bone.<sup>81</sup> Thus, the baseline behavior of the beam model before augmentation was deemed to be consistent with the mechanical behavior of vertebral trabecular bone, albeit while assuming symmetry of properties in tension and compression.

Micro FE modeling of the augmentation stage of the treatment, meanwhile, required the following compromises to make the simulation feasible. First, the interface separation characteristics presented in Figure 5 assumed the 2 modes of separation were independent of each other without any mixed mode effects. Second, load transfer between the bone elements and the solid cement elements was achieved via degree of freedom coupling, thus removing the ability to account for micromotion at the individual trabecula level.

Modeling the balloon expansion process within the trabecular network would also have been desirable; however, the additional complexity of such an analysis was beyond scope of the present study. A conservative approach was instead adopted

by assuming no initial material damage after augmentation.

The macroscale model also necessitated assumptions shared by many FE models of the spine such as homogeneous continuum properties and the application of follower loads to replicate in vivo stabilizing muscle forces. Due to using this follower-load approach, our model omitted the role of muscle compensation mechanisms in absorbing and stabilizing loads throughout the spinal column. Investigation of endplate stress distributions and adjacent-level fractures was also beyond the scope of the present study, given that the primary focus was to consider recollapse of the treated level. Nucleus pulposus pressures of 0.475 MPa and 0.531 MPa in our baseline untreated model for standing loads also showed excellent agreement with in vivo disc pressure measurements<sup>58,82</sup>. These findings, combined with the considerable previous work to validate the model directly with specimen-specific tests, allows confidence that the behavior of the baseline model before augmentation was representative of the in vivo situation.

Modification of the model to replicate the augmented case was carefully conducted to preserve the integrity of the previous validations by isolating changes in the model solely to the newly meshed L1 trabecular centrum incorporating 2 cement masses. It is important to recall, however, that the geometry and volume of the cement masses were also idealized to 2 fixed volumes of 2 mL and 6 mL.

## CONCLUSIONS

The significant risk of interface separation suggested by the present study supports the hypothesis that interface separation cannot be discounted as a contributory factor in the recollapse of kyphoplasty-treated vertebrae. It is therefore recommended that future macroscale simulations of the treatment should be capable of detecting interface separation and its subsequent effects on load transfer within treated vertebrae. These results further illustrate the importance of ensuring adequate cement infiltration into the compacted bone periphery during kyphoplasty so that a mechanically stable interlock can be established. Achieving such an outcome in a safe manner requires a multifaceted approach with the development of new techniques, tools, and biomaterials to all play a role in solving this challenging issue.

## REFERENCES

1. Goz V, Errico TJ, Weinreb JH, et al. Vertebroplasty and kyphoplasty: national outcomes and trends in utilization from 2005 through 2010. *Spine J*. 2015;15(5):959–965. doi:10.1016/j.spinee.2013.06.032
2. Haccin-Bey L. Current and emerging treatment strategies for vertebral compression fractures. *Orthop Res Rev*. 2012;4:65–75.
3. Hulme P, Krebs J, Ferguson SJ, Berlemann U. Vertebroplasty and kyphoplasty: a systematic review of 69 clinical studies. *Spine (Phila Pa 1976)*. 2006;31(17):1983–2001. doi:10.1097/01.brs.0000229254.89952.6b
4. Garfin SR, Yuan HA, Reiley MA. New technologies in spine: kyphoplasty and vertebroplasty for the treatment of painful osteoporotic compression fractures. *Spine (Phila Pa 1976)*. 2001;26(14):1511–1515. <http://www.ncbi.nlm.nih.gov/pubmed/11462078>. Accessed February 15, 2021.
5. Van Meirhaeghe J, Bastian L, Boonen S, Ranstam J, Tillman JB, Wardlaw D. A randomized trial of balloon kyphoplasty and non-surgical management for treating acute vertebral compression fractures: vertebral body kyphosis correction and surgical parameters. *Spine (Phila Pa 1976)*. 2013;38(12):971–983. doi:10.1097/BRS.0b013e31828e8e22
6. Frankel BM, Monroe T, Wang C. Percutaneous vertebral augmentation: an elevation in adjacent-level fracture risk in kyphoplasty as compared with vertebroplasty. *Spine J*. 2007;7(5):575–582. doi:10.1016/j.spinee.2006.10.020
7. Meyer C, Van Gaalen K, Leschinger T, et al. Kyphoplasty of osteoporotic fractured vertebrae: a finite element analysis about two types of cement. *Biomed Res Int*. 2019;(April). doi:10.1155/2019/9232813
8. Zhao WT, Qin DP, Zhang XG, Wang ZP, Tong Z. Biomechanical effects of different vertebral heights after augmentation of osteoporotic vertebral compression fracture: a three-dimensional finite element analysis. *J Orthop Surg Res*. 2018;13(1):1–10. doi:10.1186/s13018-018-0733-1
9. Ledlie JT, Renfro MB. Kyphoplasty treatment of vertebral fractures: 2-year outcomes show sustained benefits. *Spine (Phila Pa 1976)*. 2006;31(1):57–64.
10. Belkoff SM, Mathis JM, Fenton DC, Scribner RM, Reiley ME, Talmadge K. An ex vivo biomechanical evaluation of an inflatable bone tamp used in the treatment of compression fracture. *Spine (Phila Pa 1976)*. 2001;26(2):151–156. <http://www.ncbi.nlm.nih.gov/pubmed/11154534>. Accessed February 15, 2021.
11. Tatsumi RL, Ching AC, Byrd GD, Hiratzka JR, Threlkeld JE, Hart RA. Predictors and prevalence of patients undergoing additional kyphoplasty procedures after an initial kyphoplasty procedure. *Spine J*. 2010;10(11):979–986. doi:10.1016/j.spinee.2010.08.027
12. Kim KHS, Kuh SU, Park JY, Chin DK, Cho YE. What is the importance of “halo” phenomenon around bone cement following vertebral augmentation for osteoporotic compression fracture? *Osteoporos Int*. 2012;23(10):2559–2565. doi:10.1007/s00198-012-1896-y
13. Mudano AS, Bian J, Cope JU, et al. Vertebroplasty and kyphoplasty are associated with an increased risk of secondary vertebral compression fractures: a population-based cohort study. *Osteoporos Int*. 2009;20(5):819–826. doi:10.1007/s00198-008-0745-5
14. Fribourg D, Tang C, Sra P, Delamarter R, Bae H.

- Incidence of subsequent vertebral fracture after kyphoplasty. *Spine (Phila Pa 1976)*. 2004;29(20):2270–2276, discussion 2277. <http://www.ncbi.nlm.nih.gov/pubmed/15480139>. Accessed February 15, 2021.
15. Pflugmacher R, Schroeder R-J, Klostermann CK. Incidence of adjacent vertebral fractures in patients treated with balloon kyphoplasty: two years' prospective follow-up. *Acta Radiol*. 2006;47(8):830–840. doi:10.1080/02841850600854928
  16. Harrop JS, Prpa B, Reinhardt MK, Lieberman I. Primary and secondary osteoporosis' incidence of subsequent vertebral compression fractures after kyphoplasty. *Spine (Phila Pa 1976)*. 2004;29(19):2120–2125. <http://www.ncbi.nlm.nih.gov/pubmed/15454702>. Accessed February 15, 2021.
  17. Mueller M, Daniels-Wredenhagen M, Besch L, Decher C, Seekamp a. Postoperative aseptic osteonecrosis in a case of kyphoplasty. *Eur Spine J*. 2009;18(suppl 2):213–216. doi:10.1007/s00586-008-0843-2
  18. Leslie-Mazwi T, Deen HG. Repeated fracture of a vertebral body after treatment with balloon kyphoplasty: case illustration. *J Neurosurg Spine*. 2006;4(3):270. doi:10.3171/spi.2006.4.3.270
  19. Kim Y-Y, Rhyu K-W. Recompression of vertebral body after balloon kyphoplasty for osteoporotic vertebral compression fracture. *Eur Spine J*. 2010;19(11):1907–1912. doi:10.1007/s00586-010-1479-6
  20. Ohba T, Ebata S, Clinton D, Koyama K, Haro H. Instability of treated vertebrae after balloon kyphoplasty causing paraparesis in osteoporotic vertebral compression fracture: a report of two cases. *Eur Spine J*. July 2012;1–5. doi:10.1007/s00586-012-2414-9
  21. Krüger A, Oberkircher L, Kratz M, Baroud G, Becker S, Ruchholtz S. Cement interdigitation and bone-cement interface after augmenting fractured vertebrae: a cadaveric study. *Int J Spine Surg*. 2012;6(2012):115–123. doi:10.1016/j.ijsp.2012.02.005
  22. Dalton BE, Kohm AC, Miller LE, Block JE, Poser RD. Radiofrequency-targeted vertebral augmentation versus traditional balloon kyphoplasty: radiographic and morphologic outcomes of an ex vivo biomechanical pilot study. *Clin Interv Aging*. 2012;7:525–531. doi:10.2147/CIA.S37025
  23. Dong-hoon Y, Cho KH, Chung YS, et al. Effect of vertebroplasty with bone filler device and comparison with balloon kyphoplasty. *Eur Spine J*. 2014;23:2718–2725. doi:10.1007/s00586-014-3379-7
  24. Togawa D, Bauer TW, Lieberman IH, Takikawa S. Histologic evaluation of human vertebral bodies after vertebral augmentation with polymethyl methacrylate. *Spine (Phila Pa 1976)*. 2003;28(14):1521–1527. <http://www.ncbi.nlm.nih.gov/pubmed/12865838>. Accessed February 15, 2021.
  25. Diamond TH, Clark WA, Kumar SV. Histomorphometric analysis of fracture healing cascade in acute osteoporotic vertebral body fractures. *Bone*. 2007;40(3):775–780. doi:10.1016/j.bone.2006.10.009
  26. Huiskes R. Failed innovation in total hip replacement. Diagnosis and proposals for a cure. *Acta Orthop Scand*. 1993;64(6):699–716.
  27. Moreo P, Garciaaznar J, Doblare M. A coupled viscoplastic rate-dependent damage model for the simulation of fatigue failure of cement–bone interfaces. *Int J Plast*. 2007;23(12):2058–2084. doi:10.1016/j.ijplas.2007.02.005
  28. Miller MA, Race A, Gupta S, Higham P, Clarke MT, Mann KA. The role of cement viscosity on cement-bone apposition and strength: an in vitro model with medullary bleeding. *J Arthroplasty*. 2007;22(1):109–116. doi:10.1016/j.arth.2006.02.076
  29. Waanders D, Janssen D, Mann KA, Verdonschot N. The mechanical effects of different levels of cement penetration at the cement-bone interface. *J Biomech*. 2010;43(6):1167–1175. doi:10.1016/j.jbiomech.2009.11.033
  30. Tozzi G, Zhang Q-H, Tong J. 3D real-time micro-mechanical compressive behaviour of bone-cement interface: experimental and finite element studies. *J Biomech*. 2012;45(2):356–363. doi:10.1016/j.jbiomech.2011.10.011
  31. Zhao Y, Robson Brown KA, Jin ZM, Wilcox RK. Trabecular level analysis of bone cement augmentation: a comparative experimental and finite element study. *Ann Biomed Eng*. 2012;40(10):2168–2176. doi:10.1007/s10439-012-0587-3
  32. Janssen D, Mann KA, Verdonschot N. Micro-mechanical modeling of the cement-bone interface: the effect of friction, morphology and material properties on the micromechanical response. *J Biomech*. 2008;41(15):3158–3163. doi:10.1016/j.jbiomech.2008.08.020
  33. Miller MA, Mann KA. Fluid-structure interactions in micro-interlocked regions of the cement-bone interface. *Comput Methods Biomech Biomed Engin*. 2013;(April):37–41. doi:10.1080/10255842.2013.767336
  34. Race A, Mann KA, Edidin AA. Mechanics of bone/PMMA composite structures: an in vitro study of human vertebrae. *J Biomech*. 2007;40(5):1002–1010. doi:10.1016/j.jbiomech.2006.04.003
  35. Villarraga ML, Bellezza AJ, Harrigan TP, Crompton PA, Kurtz SM, Edidin AA. The biomechanical effects of kyphoplasty on treated and adjacent nontreated vertebral bodies. *J Spinal Disord Tech*. 2005;18(1):84–91. <http://www.ncbi.nlm.nih.gov/pubmed/15687858>. Accessed February 15, 2021.
  36. Dabirrahmani DD, Becker S, Hogg M, Appleyard R, Baroud G, Gillies M. Mechanical variables affecting balloon kyphoplasty outcome—a finite element study. *Comput Methods Biomech Biomed Engin*. 2012;15(April 2013):211–220.
  37. Purcell P, Tyndyk M, McEvoy F, Tiernan S, Morris S. A parametric finite element analysis of the compacted bone-cement interface following balloon kyphoplasty. *Proc Inst Mech Eng H*. 2014;228(1):89–97. doi:10.1177/0954411913513575
  38. Purcell P, Tyndyk M, McEvoy F, Tiernan S, Morris S. Stress distribution at the bone-cement interface changes during kyphoplasty rehabilitation. *IEEE Comput Soc*. 2013; Southern Biomedical Engineering Conference:65–66. doi:10.1109/SBEC.2013.41
  39. Ottardi C, La Barbera L, Pietrogrande L, Villa T. Vertebroplasty and kyphoplasty for the treatment of thoracic fractures in osteoporotic patients: a finite element comparative analysis. *J Appl Biomater Funct Mater*. 2016;14(2):e197–e204. doi:10.5301/jabfm.5000287
  40. Zhang L, Yang G, Wu L, Yu B. The biomechanical effects of osteoporosis vertebral augmentation with cancellous bone granules or bone cement on treated and adjacent nontreated vertebral bodies: a finite element evaluation. *Clin Biomech (Bristol, Avon)*. 2010;25(2):166–172. doi:10.1016/j.clinbiomech.2009.10.006
  41. Li Y, Lewis G. Influence of loading cycle profile and frequency on a biomechanical parameter of a model of a balloon kyphoplasty-augmented lumbar spine segment: a finite element analysis study. *Biomed Mater Eng*. 2010;20(6):349–359.

42. Tsouknidas A, Savvakis S, Asaniotis Y, Anagnostidis K, Lontos A, Michailidis N. The effect of kyphoplasty parameters on the dynamic load transfer within the lumbar spine considering the response of a bio-realistic spine segment. *Clin Biomech (Bristol, Avon)*. 2013;28(9-10), 949–955. doi:10.1016/j.clinbiomech.2013.09.013
43. Rohlmann A, Zander T, Bergmann G. Spinal loads after osteoporotic vertebral fractures treated by vertebroplasty or kyphoplasty. *Eur Spine J*. 2006;15(8):1255–1264. doi:10.1007/s00586-005-0018-3
44. Schneider CA, Rasband WS, Eliceiri KW. NIH Image to ImageJ: 25 years of image analysis. *Nat Methods*. 2012;9(7):671–675.
45. Doube M, K~~osowski~~ MM, Arganda-Carreras I, et al. BoneJ: free and extensible bone image analysis in ImageJ. *Bone*. 2010;47(6):1076–1079. doi:10.1016/j.bone.2010.08.023
46. Bone 3D Project Team (ESA MAP Project AO-99-030 ESTEC Contract No. 14592/00/NL/SH). Vertebral body data set ESA29-99-L3. 2005. <http://bone3d.zib.de/data/2005/ESA29-99-L3/>. Accessed February 15, 2021.
47. Lee TC, Kashyap RL, Chu CN. Building skeleton models via 3-D medial surface axis thinning algorithms. *CVGIP Graph Model Image Process*. 1994;56(6):462–478.
48. Betten J. Generalization of nonlinear material laws found in experiments to multi-axial states of stress. *Eur J Mech A Solids*. 1989;8:325–339.
49. Kosmopoulos V, Keller TS. Predicting trabecular bone microdamage initiation and accumulation using a non-linear perfect damage model. *Med Eng Phys*. 2008;30(6):725–732. doi:10.1016/j.medengphy.2007.02.011
50. Kosmopoulos V, Schizas C, Keller TS. Modeling the onset and propagation of trabecular bone microdamage during low-cycle fatigue. *J Biomech*. 2008;41(3):515–522. doi:10.1016/j.jbiomech.2007.10.020
51. Kosmopoulos V, Keller TS. Finite element modeling of trabecular bone damage. *Comput Methods Biomech Biomed Engin*. 2003;6(March 2015):209–216. doi:10.1080/1025584031000149089
52. Tyndyk M, Barron V, McHugh PE, O'Mahoney D. Generation of a finite element model of the thoracolumbar spine. *Acta Bioeng Biomech*. 2007;9(1):35–46. <http://www.ncbi.nlm.nih.gov/pubmed/17933103>. Accessed February 15, 2021.
53. Tyndyk M, McHugh PE, O'Mahoney D. Effects of intervertebral disc degeneration on the flexibility of the thoracolumbar spine [pdf]. *J Long Term Eff Med Implant*. 2008;18(4):269–288.
54. Tawackoli W, Marco R, Liebschner MAK. The effect of compressive axial preload on the flexibility of the thoracolumbar spine. *Spine (Phila Pa 1976)*. 2004;29(9):988–993. <http://www.ncbi.nlm.nih.gov/pubmed/15105669>. Accessed February 15, 2021.
55. Tyndyk M, Barron V, McHugh PE, O'Mahoney D. Generation of a finite element model of the thoracolumbar spine. *Acta Bioeng Biomech*. 2007;9(1):35–46. <http://www.ncbi.nlm.nih.gov/pubmed/17933103>.
56. Rohlmann A, Boustani HN, Bergmann G, Zander T. A probabilistic finite element analysis of the stresses in the augmented vertebral body after vertebroplasty. *Eur Spine J*. 2010;19(9):1585–1595. doi:10.1007/s00586-010-1386-x
57. Magerl F, Aebi M, Gertzbein SD, Harms J, Nazarian S. A comprehensive classification of thoracic and lumbar injuries. *Eur Spine J*. 1994;3(4):184–201. <http://www.ncbi.nlm.nih.gov/pubmed/7866834>. Accessed February 20, 2021.
58. Sato K, Kikuchi S, Yonezawa T. In vivo intradiscal pressure measurement in healthy individuals and in patients with ongoing back problems. *Spine (Phila Pa 1976)*. 1999;24(23):2468–2474. <http://www.ncbi.nlm.nih.gov/pubmed/10626309>. Accessed February 15, 2021.
59. Rohlmann A, Claes LE, Bergmann G, Graichen F, Neef P, Wilke HJ. Comparison of intradiscal pressures and spinal fixator loads for different body positions and exercises. *Ergonomics*. 2001;44(8):781–794. doi:10.1080/00140130120943
60. Rozumalski A, Schwartz MH, Werve R, Swanson A, Dykes DC, Novacheck T. The in vivo three-dimensional motion of the human lumbar spine during gait. *Gait Posture*. 2008;28(3):378–384. doi:10.1016/j.gaitpost.2008.05.005
61. Schmidt H, Heuer F, Simon U, et al. Application of a new calibration method for a three-dimensional finite element model of a human lumbar annulus fibrosus. *Clin Biomech*. 2006;21(4):337–344. doi:10.1016/j.clinbiomech.2005.12.001
62. Polikeit A, Nolte LP, Ferguson SJ. The effect of cement augmentation on the load transfer in an osteoporotic functional spinal unit: finite-element analysis. *Spine (Phila Pa 1976)*. 2003;28(10):991–996. doi:10.1097/01.BRS.0000061987.71624.17
63. Larsen WJ. *Anatomy: Development, Function, Clinical Correlations*. Philadelphia, Saunders Elsevier; 2002. <https://books.google.ie/books?id=2iG8lkW0vZAC>. Accessed February 15, 2021.
64. Mann KA, Werner FW, Ayers DC. Mechanical strength of the cement-bone interface is greater in shear than in tension. *J Biomech*. 1999;32(11):1251–1254. <http://www.ncbi.nlm.nih.gov/pubmed/10541077>. Accessed February 15, 2021.
65. Wang J-Y, Tozzi G, Chen J, Contal F, Lupton C, Tong J. Bone-cement interfacial behaviour under mixed mode loading conditions. *J Mech Behav Biomed Mater*. 2010;3(5):392–398. doi:10.1016/j.jmbbm.2010.03.001
66. Berlemann U, Ferguson SJ, Nolte LP, Heini PF. Adjacent vertebral failure after vertebroplasty. A biomechanical investigation. *J Bone Joint Surg Br*. 2002;84(5):748–752. <http://www.ncbi.nlm.nih.gov/pubmed/12188498>. Accessed February 15, 2021.
67. Liebschner MA, Rosenberg WS, Keaveny TM. Effects of bone cement volume and distribution on vertebral stiffness after vertebroplasty. *Spine (Phila Pa 1976)*. 2001;26(14):1547–1554. <http://www.ncbi.nlm.nih.gov/pubmed/11462084>. Accessed February 15, 2021.
68. Hulme PA, Boyd SK, Heini PF, Ferguson SJ. Differences in endplate deformation of the adjacent and augmented vertebra following cement augmentation. *Eur Spine J*. 2009;18(5):614–623. doi:10.1007/s00586-009-0910-3
69. Steens J, Verdonschot N, Aalsma AMM, Hosman AJF. The influence of endplate-to-endplate cement augmentation on vertebral strength and stiffness in vertebroplasty. *Spine (Phila Pa 1976)*. 2007;32(15):E419–22. doi:10.1097/BRS.0b013e318074d4b9
70. Chevalier Y, Pahr D, Charlebois M, Heini P, Schneider E, Zysset P. Cement distribution, volume, and compliance in vertebroplasty: some answers from an anatomy-based nonlinear finite element study. *Spine (Phila Pa 1976)*. 2008;33(16):1722–1730. doi:10.1097/BRS.0b013e31817c750b
71. Greene DL, Isaac R, Neuwirth M, Bitan FD. The eggshell technique for prevention of cement leakage during

kyphoplasty. *J Spinal Disord Tech*. 2007;20(3):229–232. doi:10.1097/01.bsd.0000211276.76024.30

72. Otten LA, Bornemnn R, Jansen TR, et al. Comparison of balloon kyphoplasty with the new Kiva® VCF system for the treatment of vertebral compression fractures. *Pain Physician*. 2013;16(5):E505–E512. <http://www.ncbi.nlm.nih.gov/pubmed/24077200>. Accessed February 15, 2021.

73. Disch AC, Schmoelz W. Cement augmentation in a thoracolumbar fracture model: reduction and stability after balloon kyphoplasty versus vertebral body stenting. *Spine (Phila Pa 1976)*. 2014;39(19):E1147–E1153. doi:10.1097/BRS.0000000000000470

74. Matsuura M, Giambi H, Ogawa Y, et al. Specimen-specific nonlinear finite element modeling to predict vertebrae fracture loads after vertebroplasty. *Spine (Phila Pa 1976)*. 2014;39(22):E1291–E1296. doi:10.1038/jid.2014.371

75. Vanderroot J, Jaecques SVN, Van der Perre G, et al. Fast and accurate specimen-specific simulation of trabecular bone elastic modulus using novel beam-shell finite element models. *J Biomech*. 2011;44(8):1566–1572. doi:10.1016/j.jbiomech.2011.02.082

76. Almhdie-Imjabber A, Hambli R, Touvier J, Rozenbaum O, Lespessailles E, Jennane R. Mechanical assessment of trabecular bone stiffness using hybrid skeleton and finite element analysis. *Comput Methods Biomech Biomed Eng Imaging Vis*. 2014;(March 2015):1–8. doi:10.1080/21681163.2014.944355

77. Pothuaud L, Van Rietbergen B, Charlot C, Ozhinsky E, Majumdar S. A new computational efficient approach for trabecular bone analysis using beam models generated with skeletonized graph technique. *Comput Methods Biomech Biomed Engin*. 2004;7(March 2015):205–213. doi:10.1080/10255840412331285943

78. Purcell P, Tiernan S, McEvoy F, Morris S. Strong similarities in the creep and damage behaviour of a synthetic bone model compared to human trabecular bone under compressive cyclic loading. *J Mech Behav Biomed Mater*. 2015;48:51–59. doi:10.1016/j.jmbbm.2015.03.014

79. Rho JY, Tsui TY, Pharr GM. Elastic properties of human cortical and trabecular lamellar bone measured by nanoindentation. *Biomaterials*. 1997;18(20):1325–1330. doi:10.1016/S0142-9612(97)00073-2

80. Bayraktar HH, Morgan EF, Niebur GL, Morris GE, Wong EK, Keaveny TM. Comparison of the elastic and yield properties of human femoral trabecular and cortical bone tissue. *J Biomech*. 2004;37(1):27–35. doi:10.1016/S0021-9290(03)00257-4

81. Kopperdahl DL, Keaveny TM. Yield strain behavior of trabecular bone. *J Biomech*. 1998;31(7):601–608. doi:10.1016/S0021-9290(98)00057-8

82. Wilke H-J, Neef P, Caimi M, Hoogland T, Claes LE. New in-vivo measurements of pressures in the intervertebral disc in daily life. *Spine (Phila Pa 1976)*. 1999;24(8):755–762.

**Disclosures and COI:** This study was funded by the Irish Research Council EMBARK Postgraduate Scholarship RS/2011/399 awarded to P.P. The authors report no conflicts of interest.

**Corresponding Author:** Philip Purcell, Bio-engineering Technology Centre, Technological University Dublin, Tallaght, Dublin 24, Republic of Ireland. Phone: +353 1-404-2000; Fax: +353 1-404-2700; Email: philippurcell@outlook.com.

Published 0 Month 2021

This manuscript is generously published free of charge by ISASS, the International Society for the Advancement of Spine Surgery. Copyright © 2021 ISASS. To see more or order reprints or permissions, see <http://ijssurgery.com>.